



# Newsletter



ABATE of Oregon, Inc.

AUGUST 1985

---

## GREETINGS FROM YOUR LEGISLATIVE OFFICER:

This past Legislative Session has been very fruitful for A.B.A.T.E. of Oregon, Inc. We, as an organization, have taken a GIANT step forward in becoming recognized in the Legislature. So, now WE must spend the time and energy to get out there and get to know your local representatives, voice YOUR opinion, exercise YOUR freedom of speech, and show these elected officials that we are serious, WE ARE "DEDICATED TO THE FREEDOM OF THE ROAD". . .

We are at this time scheduling meetings with the Oregon State Police, and the Governor's Motorcycle Safety Committee as well as on-going communications with Stan Porter and the fine folks at the Oregon Traffic Safety Commission.

Topics for these meetings are: Public Awareness; Road Conditions and Proper Warning Signs; A.B.A.T.E. Action Reports; TEAM OREGON and the B.B.P.; and just plain "getting to know A.B.A.T.E. of Oregon Inc."

Keep up the GOOD WORK, get INVOLVED and WE WILL MAKE A DIFFERENCE. . .

Thanks from the Capitol City, Your Legislative Representative, Butch Harbaugh, 363-6106

---

## A MESSAGE FROM YOUR MEMBERSHIP SECRETARY!

At the last state board meeting, updated (at that time) membership lists were passed out to State Reps., to be given to your chapter's membership secretary. If there are any address corrections, please let me know so we can send newsletters to the correct addresses.

IMPORTANT: I have to know before the state board meeting if your chapter needs more new membership packets. I will have them at the board meetings, they will be signed for by your chapter reps., but I WILL NOT HAVE EXTRAS. I must know the total before the state meetings. Each new member should receive a new membership packet when they pay their money to the chapter. Each chapter should have a total number of new member packets of 5 or 10 depending on the size of the chapter. It is the responsibility of the chapter membership secretaries to keep these new member packets on hand and to let me know when supplies run low.

As membership secretary, I am also trying to contact those members who have paid their dues but never received their memberships. Let me know of anyone whose membership got messed up and we will try to make it right.

NOTE: ALL MEMBERSHIP CORRESPONDENCE GOES TO THE PO BOX, ATTENTION MEMBERSHIP SECRETARY. ALL NEWSLETTER CORRESPONDENCE AND REPORTS GO TO THE PO BOX, ATTENTION NEWSLETTER.

ALL CHAPTER REPORTS FOR DEACON GO DIRECTLY TO HIM AT HIS PO BOX IN CORNELIUS. DO NOT SEND THE COORDINATOR'S REPORTS TO PO BOX 4504. DO NOT USE THE PO BOX FOR CHAPTER BUSINESS.

All names that I have records for have been entered in the computer. I update addresses, daily, as I receive them from the PO. Thank you for all your help.

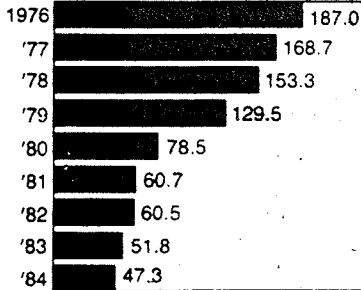
Ride Free, Carolyn



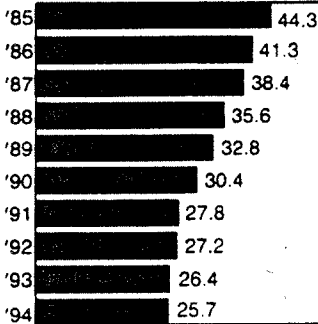
## Cutting Lead Content in Gasoline

Alarmed by substantially higher lead levels in the air—of which lead in gasoline accounts for 80%—the Environmental Protection Agency announced new regulations in March 1985, to reduce the lead content in gasoline from the 1.1 gram per gallon rate in effect since 1982, to a new rate of 0.5 grams per gallon beginning July 1, 1985. The agency has formally proposed banning lead altogether by 1988.

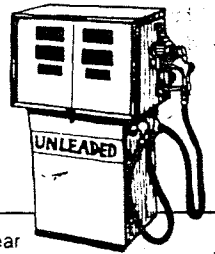
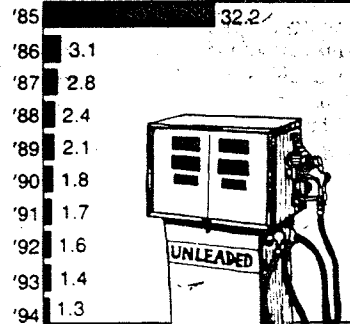
### Yearly Record \*



### Old Rate Projections \*



### New Rate Projections \*



\* for total amount of lead used in gasoline per year in thousands of metric tons.

Source: Office of Air Quality and Standards

UPI Graphic / C. Broadway

WASHINGTON (AP) — Lead concentrations in gasoline take another step down Monday, but the government says drivers who use it need not worry that their engines will knock or their engine valves will wear out as a result.

The new lower concentration is far above the level needed to prevent valve damage, EPA officials say. Knocking, or pinging, depends on octane rating, experts say, and refiners expect to maintain the same octane level.

A lot of gasoline already meets the new standard. Some major refiners have been producing at the lower concentration for months. Lead levels must decline again next year, and again in 1987.

Lead is a powerful poison that the agency has been trying to take out of the environment for years. It has been added to gasoline since the 1920s because it is the cheapest method of raising octane. Until the introduction of special hardening techniques in 1971-1975, automakers relied on lead deposits to protect engine valves against excessive wear.

Most cars made since 1975 have been designed to use unleaded gasoline to avoid destruction of the anti-pollution catalysts in the exhaust pipe. As the number of older cars declines, so does the use of leaded fuel.

Currently, leaded gasoline has about 36 percent of the market, down from 41 percent a year ago.

On Monday, refiners must reduce the maximum concentration from 1.1 grams per gallon to 0.5 gram per gallon. Come Jan. 1, the limit is 0.1 gram.

The Lundberg Letter, a trade publication, said major refiners were producing at 0.58 gram per gallon.

If you already have a knocking problem, you are better served by moving to a higher octane," said Walter Retzsch, a refining specialist at the American Petroleum Institute.

For motorists worried about valves, EPA says 0.1 gram is protection enough. Many studies have shown that high speeds and heavy loads cause rapid valve wear when unleaded gasoline is used, but EPA could find only one study aimed at finding how much lead is needed to protect valves. That study concluded that 0.04 gram to 0.07 gram was enough.

EPA left 0.1 gram in "because we were being cautious," said Jim Caldwell, head of the fuels branch in EPA's air pollution program.

"There is a great deal of conjecture whether it is needed at all" for normal driving with older engines, he said. The agency will be studying the question further in years to come as it tries to decide whether to ban all lead.

--> COMMENTS FROM THE EDITOR <--

Here's a reminder to everyone — the Environmental Protection Agency has still not set a deadline for public comment on the issue of a ban on lead additives in gasoline. Most all of you drive motorcycles that require the use of leaded fuel — some of you may even have cages with similar requirements. ALL of you are urged to write in opposition to the total ban on lead in gas. Your letters should be addressed to:

DOCKET EN-84-05  
CENTRAL DOCKET SECTION (LE-131)  
ENVIRONMENTAL PROTECTION AGENCY  
401 "M" STREET, S.W.  
WASHINGTON, D.C. 20460

## Accident kills motorcycle passenger

A Portland woman who was a passenger on a motorcycle died Sunday evening following an accident on Southeast 28th Avenue, near Woodstock Boulevard, Portland police said.

Michele A. Sewell, 22, of 3436 S.E. Francis St., was pronounced dead at the Oregon Health Sciences University, where she was taken after the 6:55 p.m. accident.

Sewell was a passenger on a motorcycle driven by David C. Nelson, 18, of the Francis Street address. He was being treated late Sunday for an arm injury at OHSU and was expected to be released.

The two were northbound on 28th Avenue when they struck a car that had stopped to make a left turn, police said. Neither was wearing a helmet, and Sewell suffered head injuries, police said. The car was driven by Thomas Leonettis, 30, of 3785 S.E. Grant St., Portland, police said.

No citations were issued. The accident is under investigation, police said, and findings will be forwarded to the Multnomah County district attorney's office.

*Has anyone noticed that the Oregonian never fails to mention the lack of helmets in fatal head injuries accidents, but when they're wearing 'em, nary a word.*

*Look at all this wasted space — a result of hasty editing. The clipping is from the Monday, July 8<sup>th</sup> OREGONIAN.*

## BEND

(No report received in the PO Box by the 15th)

Per telephone call with Louise, this was the responsibility of Bend's Coordinator, Griz.

## DOUGLAS COUNTY

(No report received in the PO Box by the 15th)

## EMERALD VALLEY CHAPTER

We are in the process of getting out Summer Run together. Hope to see everyone there. The date is August 24 and 25. We will have advance tickets available at the State Board Meeting. Contact our chapter reps.

A big congratulations goes out to our Coordinator, Stephen Perry, who passed the BBP Instructor Workshop top of the class. GREAT JOB, STEVE!

We also would like to remind everyone to check your membership expiration date. You can renew at our regular meeting place, Sundown Station, Creswell, first and third Sundays at 4:00.

Until next month.

## JACKSON COUNTY

We had a South Winds meeting with the new and old officers in June - - to discuss new ideas on how to make our chapter run smoother and get more accomplished. We all hope to see West Winds again in the coming years to help strengthen our organization.

For those of you that came to our Abbott Run this year - - hope you had a good time. We appreciate your support.

Hope your summers been a good one! Secretary, Kim

## KLAMATH FALLS

(No report received in the PO Box by the 15th)

*If Your Tattoo Is Not  
Becoming To You, You  
Haven't Been Coming To Us!*

## **PACIFIC TATTOO**

**128 East 11th Ave.  
Eugene, OR 97401**

Phone: (503) **485-7650**

**ABATE MEMBERS: SHOW YOUR CARD FOR A 15%  
DISCOUNT ON TATTOOS OVER \$25.00**

## LINCOLN COUNTY

By the time that you read this, the Third Annual Beaver Creek Run will be history. For those of you who joined us a big thanks and hope that you had a good time. It was our pleasure to have you.

It sure has been beautiful weather for riding the roads. We had a large portion of our members head to Weiser and encounter nothing but good weather and good times.

It looks like we will be having some free time for awhile. The next thing going on in Lincoln County will be our B.B.P. on September 7. We are really looking forward to it.

Really not much to say at this time, except be aware when you are on the roadways. We want you to arrive at your destination safely.

*Millie*

## NE PORTLAND

Greetings once again from NE Portland. It's been a very hectic month for everyone here what with trying to get things ready for the East Portland Summer Run coming up on August 17 and 18. While I'm on that subject, some of the flyers for the run had the dates of August 16 and 17, BUT OUR SUMMER RUN IS SCHEDULED FOR THE 17 AND 18 OF AUGUST. Hope to see a lot of people up on the mountain for it will be a very good time for all.

One of our members, Diesel Dave, found a mans ring at the Canal Creek run. If anyone knows who it belongs to, pass the word around and tell them to send a description to the Post Office Box and he will see that it gets back to the owner.

Our Fifth Birthday Party was a good time for everyone who showed up. That's it from NE Portland for this month. Ride Free, Leslie

## RIVER CITY

Hi! It will be old news by the time you read this, but River City Chapter is planning a chapter picnic/highway coffee stand July 21st at the Celilio Wayside. The idea is to have a good time while providing tired weekend drivers with coffee and a snack and reminding them they are sharing the road with motorcyclists and that we are people too! If it works, we will be out there again. If you're riding our way, stop and have a cup of joe with us.

Our B.B.P. class last June was so successful we would like to sponsor another class this fall. We are hoping to have one September 21 or 28th. This is a valuable refresher course for the serious motorcyclist. If you are interested be sure and call Teresa (298-1317) for information; a positive response is needed or we can't get the instructors out here.

*Keep having fun! Vernon 3*

## SALEM

Hi from all of us in Salem. We're on a positive roll with our new officers. Chapter motivation is constantly looking up.

By the time this newsletter comes out, our Mystery Run should be underway or close to it. August 10 and 11th. See you there.

With donations of materials, time, and effort, Vicki Mott has made Banner No. 2, for the Salem Chapter. It is identical to No. 1. a huge THANK YOU TO VICKI.

I hope I did right for my first report. I am proud to be a member and secretary for the Salem Chapter.

Ride Safe! Shirley

## SOUTHEAST PORTLAND

Just came in and washed the chain lube off my paws to write this report before going off to the regular chapter meeting. Hey! You other members! I hardly see you at the meetings. Come and participate, even with grimy paws - no one will notice. If we don't see you at the meetings hope to see you at McNeil in August, the 17 and 18th. Our regular meetings are the first and third Mondays of each month, 8 pm, Pizza Baron, 122 and Division.

Until next month - ride safe! Carl

## ST. JOHNS

Congratulations to all of St. Johns new officers for the 1985-86 year. Its good to see some new blood involved in the chapter. Several new members have been added to our chapter in the last couple of months. Welcome.

A Car Wash and Bake Sale is slated for July 20th. RD's Automotive, N. Lombard and Oswego. Silver Falls is coming along beautifully. Flyers and advance tickets are available through each chapter's state reps. If more information or tickets are needed, feel free to call Barbara, 289-2250. We hope to see you all there this year.

Ride Free, Barbara, Coordinator

## WASHINGTON COUNTY

Lost of Fun in the Sun in Washington County!!

Election time 85 brought new faces and changes. Our new Coordinator is Tom Krise, Vice Coordinator, Deacon Edwards, Secretary, (myself), Katy, Treasurer, Captain, Membership Secretary, Mom Brown, Sergeant at Arms, Crash and Animal, paraphernalia, Eric, State Reps, Kiddy and Captain and last but not least, Deacon Edwards STATE COORDINATOR. Congrats to everyone! Looking forward to a Good Year for us all.

Washington County's Mystery Run at Diamond Mill Park was a great party, with fun for everyone including the kids there. One activity was a Suzuki Bash Burn and Drag Event. Everyone got a good swing in on that one. Lots of competition, Keg Push, Plank Ride, Bike Show, Slow Race, and Powder Puff. Lots of prize ribbons got taken home. The Fundraising Committee did an excellent job on this run. Thanks to all who made it.

Till next time - - - - - Katy

## WEST PORTLAND

We have a new Coordinator, Mike (Snake) and his better half, Patty (Chatty) as Vice Coordinator. Secretary is Vicki, Membership Secretary is Mary, Treasurer is Twin Tom and State Reps. are Dennis and Nita.

Green grass, sunny days and good times were had by all who attended our Canal Creek Run. Many thanks to everyone who helped.

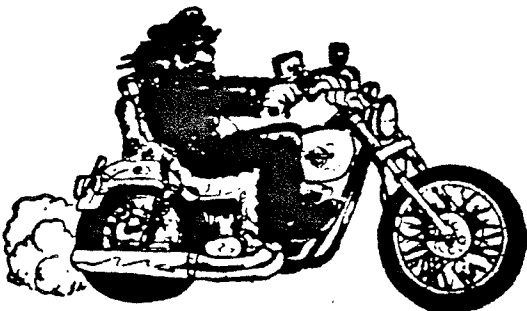
Ride free and safe. Chatty Patty

## **THE OREGONIAN - July 5th Car-cycle crash hurts 3**

Three persons were injured early Thursday when a car slammed into the rear of a motorcycle in the westbound lanes of Interstate 84 just east of the Sandy River, the Multnomah County sheriff's department reported.

David Anderson, 30, Umatilla, who was driving the motorcycle, was taken to Emanuel Hospital where he was listed in fair condition Thursday night. His passenger, Darlene Coleman, 31, also of Umatilla, was taken to Portland Adventist Medical Center where she was listed in serious condition.

The driver of the car, Cheryl Forbes, 36, Portland, was in University Hospital where she was listed in fair condition.



# Hack'd

## The Magazine For and About Sidecarists

HACK'D magazine features the best examples of stock, restyled and/or personalized sidecar rigs. Unlike other magazines about motorcycles, HACK'D is written and specially designed NOT to be like all the rest. HACK'D is for people who own, or desire to own, motorcycle/sidecar combinations.

You can receive your subscription to this quarterly publication by sending your name and address with payment of \$5.00 to:

P.O. Box 17640  
Portland, Oregon 97217


Jim Dodson, Publisher/Editor • (503) 289-5220


**ADAPT of Oregon, Inc.**  
**NEWSLETTER**

**EDITOR: GARY THOMPSON**  
**SE PORTLAND CHAPTER**


**ASSISTANT EDITOR:**  
**Carolyn Aceto;**  
**NE PORTLAND CHAPTER**

**Dedicated to**  
**FREEDOM OF THE ROAD**






THIS NEWSLETTER IS A PUBLICATION OF A.B.A.T.E. OF OREGON, INCORPORATED; ALL RIGHTS RESERVED — PORTIONS MAY BE RE-PRINTED WITH ATTRIBUTION. DEADLINE FOR SUBMISSIONS FOR PUBLICATION IS THE 15TH OF THE MONTH PRIOR TO THE PUBLICATION MONTH, UNLESS ACCOMPANIED BY AN A.B.A.T.E. SUBMISSIONS WILL NOT BE RETURNED OR SAVED. THIS PUBLICATION IS PRINTED BY ACTION COPY CENTERS, 3747 NE SANDY BLVD., PORTLAND, OR 97232; LABELING, SORTING, AND DELIVERY TO THE POST OFFICE IS DONE BY AD-MAIL, INC., 905 NW 17th AVE., PORTLAND, OR 97209.



Additional graphics were provided by Steinmetz Graphics Unlimited

*Shaky Bruce!*



## The Round-Up Cafe & Lounge

Welcomes You to Condon

Bring the gang and come on in for fine meals and your favorite beverage.

Full restaurant service

BIKERS WELCOME -

from Portland to Condon, a nice Sunday run.  
Call ahead, we'll have lunch ready.

Bring this ad with you  
for complimentary drink for your entire party (21 years and over).

Allan Blackford, Proprietor - A.B.A.T.E. Member  
Phone 384-2543 Condon, OR 97823

### A MESSAGE FROM YOUR STATE COORDINATOR

Well, summer is here and it's been beautiful riding weather (NO RAIN!) The July State Board meeting was held in Newport on July 13th, with Lincoln County's Beaver Creek Run afterwards - a good time was had by all! This was the second State Board in the past year that all 26 Chapter Reps bothered to show up for - doesn't say much for our organization. In the future, I'll use this section to list those Chapters that aren't represented at the meetings, and I'll also list those Chapters in non-compliance with the Rules of Operation, specifically, Article 5, #3 (Chapters will communicate with the State Coordinator BY-MONTHLY! I want & NEED to have copsy of all Chapter Minutes sent to me twice a month. I don't know what's happening, nor can I help if I don't have any information from the chapter level. Please send these Minutes and all other Chapter input to "Deacon" (John Edwards), P.O. Box 88, Cornelius, OR 97113, or call me at 359-9364. Talk to the recorder! I'll call you back!

Last month I neglected to list our new State Recording Secretary - she's Kiddy (Cindy Turner). I also left out Marge Gunter, our new Paraphernalia Officer. Please note the new address on the order form.

... 'til next month! Deacon

# WANTED MOTORCYCLE TRAINING SPECIALISTS

**SEE! Rider improvement before your very eyes!**  
**HEAR! "Gee, I didn't know that!"**  
**FEEL! Satisfaction in helping others learn to ride safely!**

**REQUIREMENTS** Interest in teaching beginning and experienced motorcycle rider classes, a reasonably clean driving record, willingness to travel

**PAY** Varies (but you do get paid)

**TRAINING** is provided by Team Oregon at no cost to you, and requires six days of your time. Application and interview is required.

To apply, have your Chapter Board Rep ask for an application form, or contact:

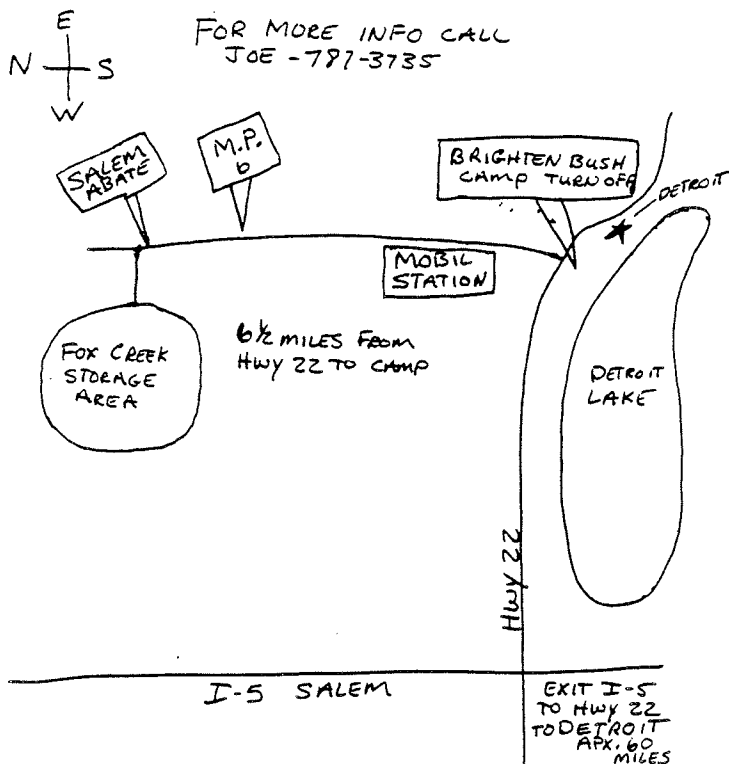
**TEAM OREGON Mobile Better Biking Program**

5224 Cherry Heights Road West

The Dalles, Oregon 97058

(503)298-1317

**JOIN TEAM OREGON AND SEE THE STATE!**



FOR MORE INFO CALL  
JOE - 787-3735

*Salem Chapter of*  
**? ABATE ?**  
**? 1<sup>ST</sup> ANNUAL**  
**MYSTERY?**  
**RUN??**  
**"GAMES"**  
**AUGUST 10<sup>th</sup> & 11<sup>th</sup>**  
**at FOX CREEK STORAGE AREA**  
**DONATION: \$10 SING. \$18 COUPLE**  
**— INCLUDES —**  
**SPAGHETTI DINNER**  
**&**  
**PANCAKE BREAKFAST**  
**"ALCOHOL AWARENESS ENFORCED"**

FOOD

FAMILY WELCOME

EXIT 4 LAKE

DETROIT

EAST ON 22, LEFT AT BRIGHTEN BUSH  
TURN OFF. MOBIL ON LEFT - ROAD SIGN  
ON RIGHT - 6 1/2 MILES TO SALEM CHAPTER  
SIGN

# SUMMER RUN '85

AUGUST 17<sup>TH</sup> & 18<sup>TH</sup> '1985'

DONATION: \$10<sup>00</sup> PER PERSON AT GATE!! KIDS UNDER 15 FREE!!

- DONATION INCLUDES -

CAMPING - LIVE MUSIC - GAMES  
BEVERAGES - TROPHIES & FUN!!

- SPONSORED BY -

EAST PORTLAND ABATE

TAKE U.S. 26 TO ZIG ZAG, OR. - TURN ON  
EAST LOLO PASS RD AND FOLLOW SIGNS

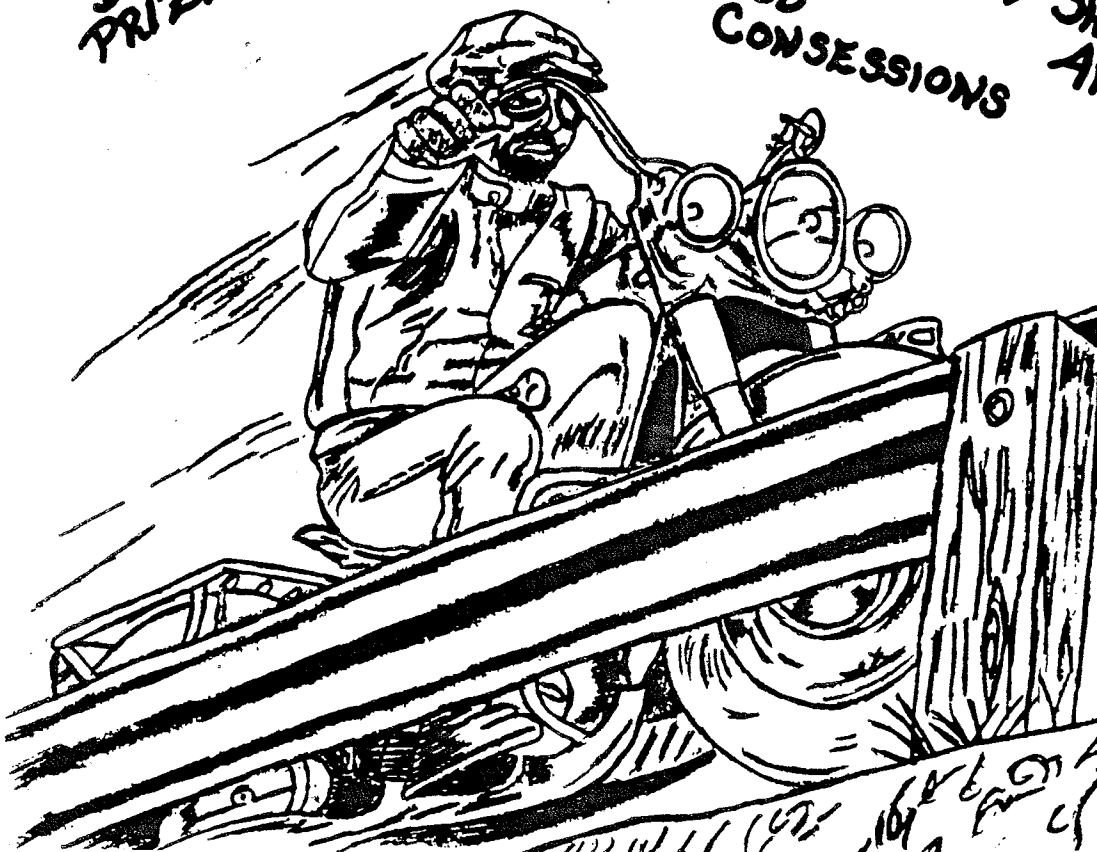
DOOR  
PRIZES

FOOD  
CONSESSIONS

T-SHIRTS  
AVAILABLE

"ALL BIKERS"  
WELCOME

INFO: 287-3960



GATE CLOSES  
AT 10PM. THE 16<sup>TH</sup>  
DON'T BE LATE!!

# EMERALD VALLEY

August  
24  
+  
25

## LIVE MUSIC

Games - Win trophies

Door Prize Drawings

Free Beverage

Free Chicken dinner

Concessions

Camping

## Donation

\$10 - single

\$15 - couple

Run pins with advanced tickets

INFO: 747-1980  
942-4332

Brice Creek  
Summer  
Run  
85'

Run spot

Brice Creek

Layne Creek

76 Union Store

Disston Store

Approx: 26 miles

Follow Signs

Dorena Res.

Row River tavern

Eugene

Cottage Grove

EXIT

Village Green

Roseburg

I 5



Sixth Annual 1985

# WINDY CREEK WINDY RUN Sept. 14+15

Donations at Gate

\$7<sup>00</sup> Single  
12<sup>00</sup> Couple

Presented

by -

Douglas County

ABATE

... Live Music ... Beverages ... RunPin ... Games ... Prizes ...

... Door Prizes ... Wet T-Shirt Contest, \$25<sup>00</sup> + Donations ...

... Glendale Lions Club will sponsor a concession stand at reasonable prices

Please - no children, dogs or firearms - everyone else is welcome

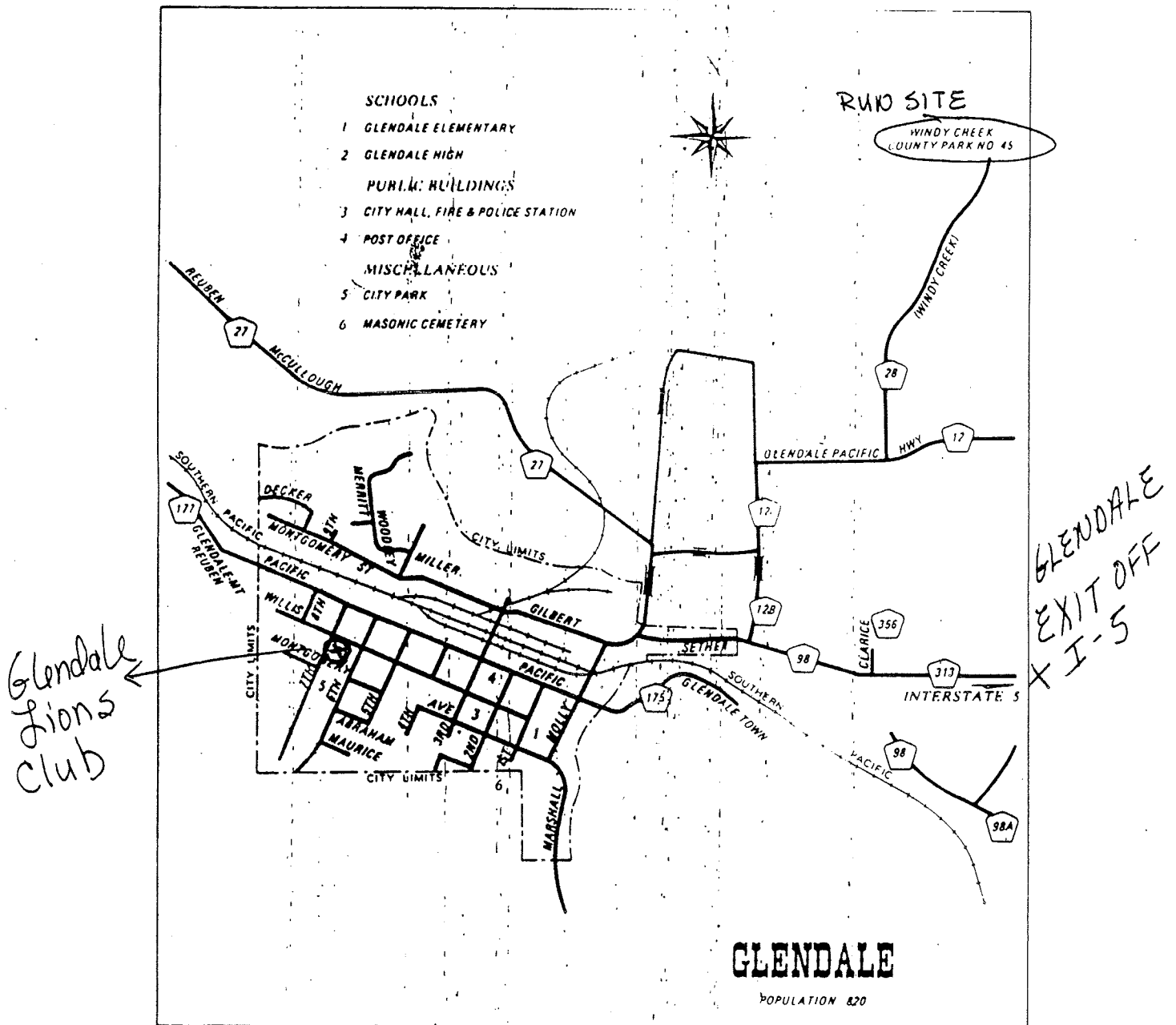
# Directions to September State Meeting

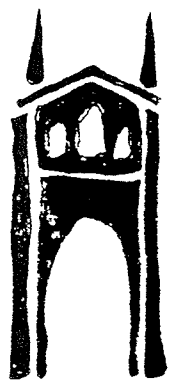
Take I-5 exit to Glendale

Turn Left off Pacific on to 7th

Go 1 block to Willis Street

After crossing Willis St. - Driveway  
on left - Glendale Lions Club





HEAR YE,  
HEAR YE.



St. Johns ABATE

Presents their 2nd Annual  
Silver Falls State Park Run

September 20-22

Indoor Overnight Facilities at  
the OLD RANCH

ADVANCE Ticket Sales Only

\$20<sup>00</sup> Single

\$30<sup>00</sup> Couple

Children under 14 \$6<sup>00</sup>

Deadline

Sept. 14th

Includes: ALL You CAN Eat Meals Sat.

AND Sunday Breakfast

Door Prizes

Beverages

Run Pin

Nature Hikes

Games for Adults & Children

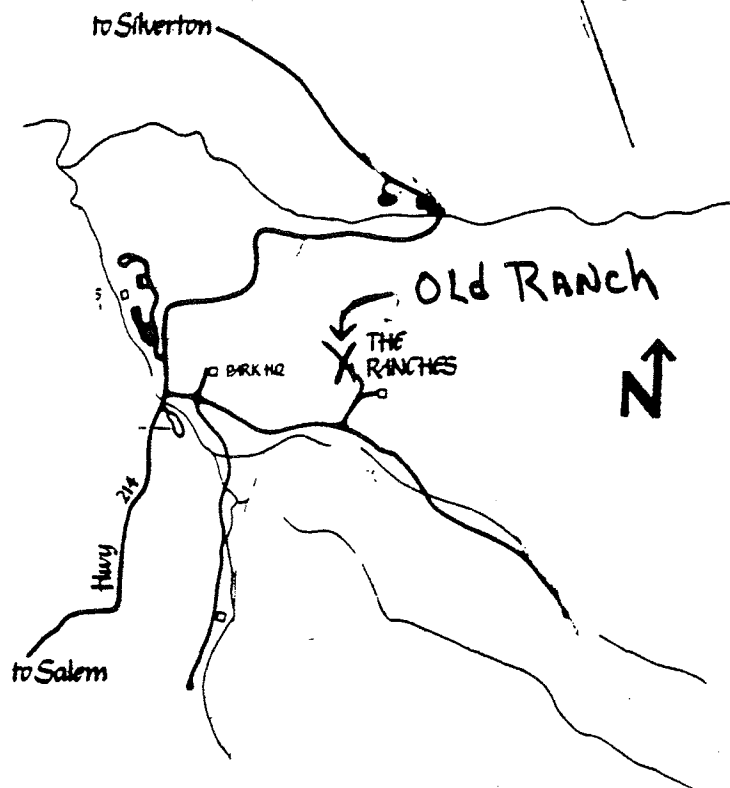
For Info Call:

BARBARA 289-2250

Vince 289-8127

Jim 289-5220

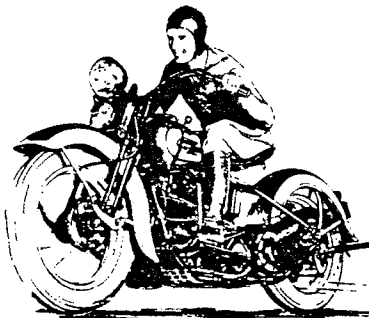
Slumber  
at  
Silver Falls—  
cabins or  
camping,  
take your  
pick!



Silver Falls State Park offers a spell-binding, shimmering display of tumbling waters. Ten spectacular waterfalls, each diving and dancing to its own tune, mesmerize visitors, drawing them back year after year.

26 miles east of Salem

**Silver Falls State Park**



Advance Ticket  
Sales ONLY

Deadline  
Sept. 14th

**REMINDER**



## Woman charged with murder attempt in hit-and-run case

A 20-year-old Portland woman was arrested Saturday on charges of attempted murder after an incident in which a couple riding a motorcycle was run down by an automobile in Southeast Portland.

Teresa Marie Dodge, 1136 N.E. 181st, Apt. 11, was lodged in Multnomah County Justice Center at 9:30 a.m. on two counts of attempted murder in connection with 2:30 a.m. hit-and-run incident at Southeast 38th Avenue and Clinton Street.

Bail was set at \$20,000 on both counts, and Dodge was scheduled to be arraigned Monday.

Injured was Charles W. Moyer, 24, also of 1136 N.E. 181st Ave., Apt. 11, and Cherie L. Greenman, 25, 3343 S.E. Stark. The two were riding a motorcycle eastward on Clinton when their motorcycle and Dodge's car collided, according to Sgt. Jay Decker, public information officer for the Portland Police Bureau.

Moyer was listed in fair condition with bruises and abrasions at Portland Adventist Medical Center, and Greenman was listed in satisfactory condition at Providence Medical Center with a fractured pelvis and cuts and bruises, officials at both hospitals said.

Some residents on Clinton Street, awakened by the collision, said they saw a vehicle driving away from the scene, a woman lying on the street and a man angrily yelling at the car leaving the scene.

*This story just goes to show you, be discreet! Ain't too many chicks willing to share the pillion seat with another chick!*

THE OREGONIAN - SUNDAY, JULY 7th

2 - METRO, Wed., June 26, 1985

## Dirt bikes enter police force

by STEVE HUNTER  
of The Outlook staff

Gresham police officers will hit the dusty trail this summer to try to curtail the motorized dirt bikers who ride illegally on undeveloped land throughout the city.

Police officials decided to add two dirt bikes to the force after numerous trespassing and noise complaints from residents near undeveloped property, said Sgt. Kent Leary, Gresham police spokesman.

The Suzuki 250s are on loan this summer to Gresham from the Multnomah County Sheriff's Office.

"Our motorcycles and cars can't get to these areas," said Leary. "We needed to borrow these dirt bikes to address that problem and start enforcing off-road vehicle ordinances."

Motorcycle officers Roger Bleth and Dennis Bunker will mount the dirt bikes periodically throughout the summer to patrol undeveloped areas where bikers often ride.

Bleth and Bunker will be able to ride the dirt bikes directly to the various sites because the bikes are licensed for the street. Bleth said they should be able to catch many more bikers.

"The kids take off on us now when they see us coming," said Bleth. "They just head into the woods. But when they find out we can get to where they're at, it should slow them down."

The dirt bikers can be cited for trespassing, excessive noise in a residential area and illegally riding the unlicensed bikes on streets. Police also may seize the bike.

And since many of the riders are teenagers, the police will contact the parents of kids. Parents also could be cited if they allowed their child to ride illegally, said Bunker.

"It's been tough to catch them," said Bleth. "But we expect a drastic rise in the number of citations."

The police dirt bike is designed for off-road use and is 500 pounds lighter

than a police motorcycle, said Bleth. Both officers will wear police helmets and shirts. But they will wear Levi jeans and work or hiking boots rather than their usual police pants and high leather boots.

"It'll be more comfortable and easier to move," said Bleth about his new outfit.

Dirt bikers ride in just about any undeveloped area around town, said the officers. But they especially enjoy riding in areas near railroad tracks such as south of West Powell Boulevard between Southwest Towle Avenue and Southeast 190th Drive.

That's the same area where a horse was killed last fall after it ran into a fence and broke its neck. The horse was apparently chased by a motorcyclist and a dog.

The only legal area to ride dirt bikes is the off-road course just east of Lewis and Clark State Park and south of Interstate 84, said the officers.

Otherwise, a rider would need writ-

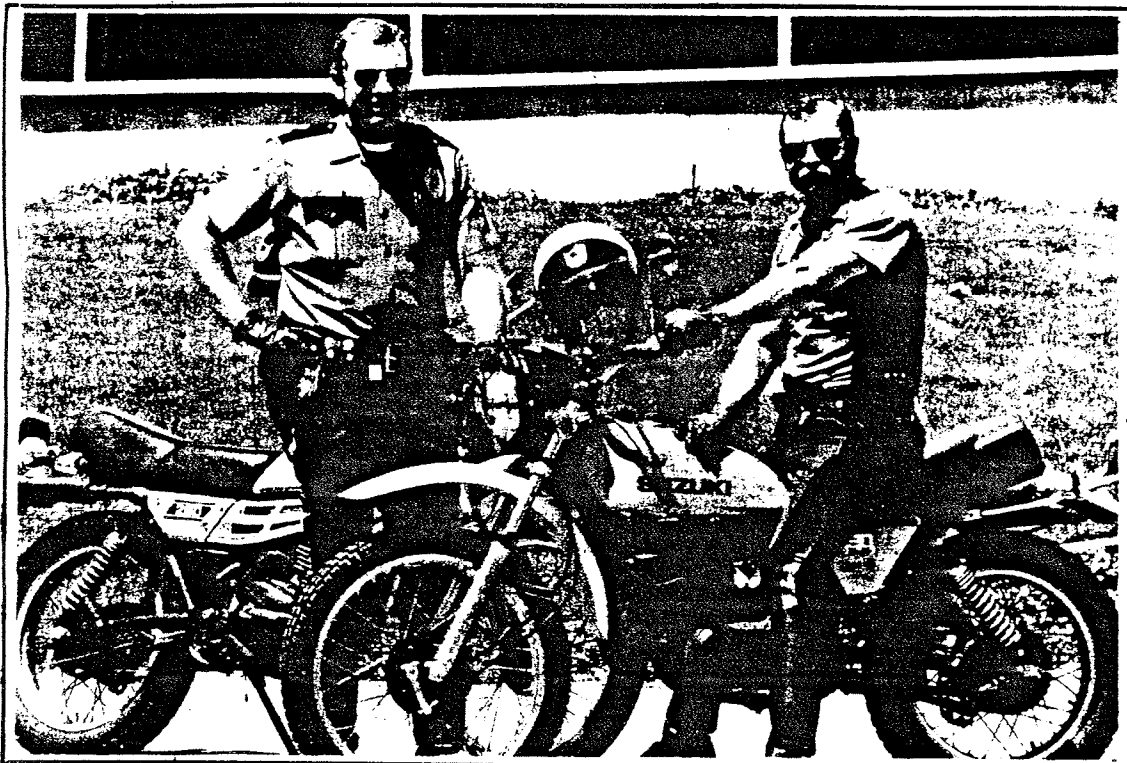
ten permission from the property owner and that owner would need to be on file with the police department to allow the off-road use, according to city ordinances.

"We've had numerous complaints from residential areas surrounding undeveloped land," said Bleth. "The noise and dust has made their life miserable. We see this as the only answer."

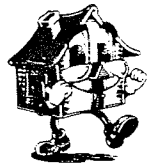
If the dirt bike patrol works to curtail the illegal bikers, Gresham may look into buying its own bikes, said Leary.

The sheriff's office has used dirt bike patrols the last three or four years, especially when bikers extended beyond the boundaries of the course near Lewis and Clark State Park, said Bart Whelan, sheriff's office spokesman.

But he said the county probably won't staff any bikes this summer because of cutbacks in personnel.



## MOVING?



*DON'T LEAVE A.B.A.T.E. behind. Please send us your name, address, etc., to the P.O. BOX*

## Where to write

Write to programs and performers in care of the network on which they appear.

ABC, 7 W. 66th St., New York, N.Y., 10023. Portland affiliate: KATU (2), Box 2, Portland, Ore. 97207.

CBS, 51 W. 52nd St., New York, N.Y., 10019. Portland affiliate: KOIN (6), 222 S.W. Columbia St., Portland, Ore. 97201.

NBC, 30 Rockefeller Plaza, New York, N.Y., 10027. Portland affiliate: KGW (8), 1501 S.W. Jefferson St., Portland, Ore. 97201.

PBS, 475 L'Enfant Plaza S.W., Washington, D.C. 20024. Portland affiliate: KOAP (10), 2828 S.W. Front Ave., Portland, Ore. 97201.

Independents: KECH (22), 4923 Indiar School Road N.E., Salem, Ore. 97305. KPDX (49), 910 N.E. Union, Portland, Ore. 97232. KPTV (12), Box 3401, Portland, Ore. 97208.



# A.B.A.T.E. of Oregon, Inc.

P. O. Box 4504  
Portland, Oregon 97208

*Dedicated to Freedom of the Road.*

## **\*\* WHY SHOULD I ADVERTISE IN THE A.B.A.T.E. NEWSLETTER? \*\***

A.B.A.T.E. of Oregon has over 650 members across the state to which newsletters are mailed the first week of each month. In addition, many members have family memberships, which means that the majority of newsletters are read by more than one person.

Our advertising rates are set to allow you the maximum amount of flexibility in purchasing advertising space in our newsletter, and we sell space on a quarterly, half-yearly, or yearly basis. Our rates are listed below:

BUSINESS	1/4 PAGE:
CARD SIZE: \$ 25.00 - 3 months	\$ 33.00 - 3 months
\$ 45.00 - 6 months	\$ 60.00 - 6 months
\$ 75.00 - 12 months	\$100.00 - 12 months
1/2 PAGE: \$ 50.00 - 3 months	FULL PAGE: \$85.00 - 3 months
\$ 95.00 - 6 months	\$160.00 - 6 months
\$150.00 - 12 months	\$250.00 - 12 months

To allow even more flexibility, your advertisement may be changed each month for the duration of your purchased time. For example, if you run a business card size ad for three months, you can submit three business cards offering month long or limited time specials. Should you purchase ad space for a year, you could change your ad 12 times! Advertising copy must be submitted by the 15th of the month in order to appear in the following month's newsletter, and must be camera ready. To order your ad in our widely read newsletter, please fill in the form below, send it and your first month's ad copy, pre-paid, to ABATE of Oregon, Inc., P.O. Box 4504, Portland, Oregon 97208.

------(please print)-----

FIRM NAME).....

ADDRESS).....(PHONE).....

CITY).....(ZIP CODE).....

SIZE OF ADVERTISEMENT).....(TIME TO RUN).....

(please check one) SAME.....or DIFFERENT.....ad copy each month.

Name & title of person placing ad).....

(Please make checks payable to: A.B.A.T.E. of Oregon, Inc.)

**\*\* THANK YOU \*\***

**\*\* ABATE PARAPHERNALIA ORDER FORM \*\***

QUANTITY	DESCRIPTION	PRICE	TOTAL
	ABATE PINS	\$ 5.00 each	
	ABATE TEE-SHIRTS	\$ 5.00 each	
	FOSSIL PINS	\$ 1.50 each	
	YEAR BARS	\$ 1.00 each	
	YEAR PATCHES (minimum order of twenty - size 1"X 2")	\$ 1.25 each	
	COUNTY ROCKERS (min. order 10)	\$ 2.75 each	
<b>ALL ORDERS MUST BE PRE-PAID - PRICES DON'T INCLUDE POSTAGE. PLEASE PRINT YOUR NAME &amp; ADDRESS CLEARLY IN THE SPACES BELOW, AND SEND THIS FORM ALONG WITH YOUR REMITTANCE TO ME AT THE ADDRESS LISTED BELOW. THANKS!</b>			
			NAME
			ADDRESS
			CITY
TOTAL COST OF THIS ORDER -> -> -> -> -> -> -> -> ->			STATE, ZIP

PLEASE MAKE CHECKS OR MONEY ORDERS PAYABLE TO ABATE OF OREGON, INC.  
 SEND ORDER TO: MARGE GUNTER, 3828 SHASTA WAY, KLAMATH FALLS, OR 97603.  
 ==> \* PAYMENT MUST ACCOMPANY ORDER \* <==

*X cut along this line*

→ → **ABATE ACTION REPORT** ← ←

POLICE OFFICER'S NAME : \_\_\_\_\_ BADGE # : \_\_\_\_\_

OFFICER'S POLICE AGENCY \_\_\_\_\_

LICENSE # OF POLICE VEHICLE : \_\_\_\_\_ OR UNIT # : \_\_\_\_\_ COLOR(S) OF CAR : \_\_\_\_\_

WAS POLICE VEHICLE MARKED? \_\_\_\_\_ IF SO, DESCRIBE MARKINGS : \_\_\_\_\_

WAS OFFICER IN UNIFORM? \_\_\_\_\_ PLAIN CLOTHES? \_\_\_\_\_ IF NOT IN UNIFORM, HOW DID HE IDENTIFY HIMSELF? \_\_\_\_\_

MORE THAN ONE OFFICER? \_\_\_\_\_ NAME & BADGE # OF OTHER OFFICERS: \_\_\_\_\_

MORE THAN ONE VEHICLE? \_\_\_\_\_ LICENSE OR UNIT #'S OF OTHER POLICE VEHICLES: \_\_\_\_\_

POLICE AGENCY(S) OF OTHER OFFICERS: \_\_\_\_\_

DATE YOU WERE CONTACTED: \_\_\_\_\_ TIME: \_\_\_\_\_ (am or pm); LOCATION: \_\_\_\_\_

CITY: \_\_\_\_\_ COUNTY: \_\_\_\_\_ WAS CONTACT MADE ON PUBLIC STREET OR PROPERTY? \_\_\_\_\_

PRIVATE PROPERTY? \_\_\_\_\_ PRIVATE RESIDENCE? \_\_\_\_\_ OTHER? \_\_\_\_\_

OFFICER'S REASON FOR CONTACT: \_\_\_\_\_

WERE YOU SEARCHED? \_\_\_\_\_ WAS YOUR PICTURE TAKEN? \_\_\_\_\_ WERE YOU GIVEN A (choose one) WARNING? \_\_\_\_\_ CITATION? \_\_\_\_\_

WERE YOU ARRESTED? \_\_\_\_\_ ON WHAT CHARGES? \_\_\_\_\_

TYPE OF CITATION YOU RECEIVED (warning; traffic; crime; other): \_\_\_\_\_

CITATION #: \_\_\_\_\_ CHARGE(S) LISTED ON CITATION: \_\_\_\_\_

IF YOU WERE CITED INTO COURT, GIVE NAME OF COURT, DATE & TIME YOU MUST APPEAR: \_\_\_\_\_

->)))))))))) PLEASE COMPLETE OTHER SIDE OF THIS FORM (((((((((((((--

## MEMBERSHIP FORMS

NOTE: POSTAL MONEY ORDERS OR CHAPTER CHECKS **ONLY!** NO PERSONAL CHECKS!

\$12 - FULL MEMBERSHIP \* NEWSLETTER, MEMBERSHIP CARD AND PATCH.

\$6 - EACH ADDITIONAL HOUSEHOLD MEMBER \* MEMBERSHIP CARD AND PATCH (NO NEWSLETTER)

### STATE COPY

NEW:\_\_\_ RENEWAL:\_\_\_ CHANGE OF ADDRESS:\_\_\_

PREVIOUS CARD #:\_\_\_ EXP. DATE:\_\_\_

NAME:\_\_\_

ADDRESS:\_\_\_

CITY:\_\_\_ STATE:\_\_\_ ZIP:\_\_\_

PHONE:\_\_\_ AGE:\_\_\_

CHAPTER:\_\_\_

NAME:\_\_\_ AGE:\_\_\_

NAME:\_\_\_ AGE:\_\_\_

NAME:\_\_\_ AGE:\_\_\_

NAME:\_\_\_ AGE:\_\_\_

NAME:\_\_\_ AGE:\_\_\_

\_\_\_ \$12 FULL MEMBERSHIP

\_\_\_ \$6 EACH ADDITIONAL HOUSEHOLD MEMBER

\_\_\_ TOTAL ENCLOSED

SEND FORM TO: Membership Secretary  
ABATE of Oregon Inc.  
PO Box 4504  
Portland, OR 97220

Date Paid:\_\_\_ REC'D BY:\_\_\_

### CHAPTER COPY

NEW:\_\_\_ RENEWAL:\_\_\_ CHANGE OF ADDRESS:\_\_\_

PREVIOUS CARD #:\_\_\_ EXP. DATE:\_\_\_

NAME:\_\_\_

ADDRESS:\_\_\_

CITY:\_\_\_ STATE:\_\_\_ ZIP:\_\_\_

PHONE:\_\_\_ AGE:\_\_\_

CHAPTER:\_\_\_

NAME:\_\_\_ AGE:\_\_\_

NAME:\_\_\_ AGE:\_\_\_

NAME:\_\_\_ AGE:\_\_\_

NAME:\_\_\_ AGE:\_\_\_

NAME:\_\_\_ AGE:\_\_\_

\_\_\_ \$12 FULL MEMBERSHIP

\_\_\_ \$6 EACH ADDITIONAL HOUSEHOLD MEMBER

\_\_\_ TOTAL ENCLOSED

SEND FORM TO:\_\_\_

LOCAL CHAPTER

Date Paid:\_\_\_ REC'D BY:\_\_\_

*cut along this line*

WERE YOU RELEASED WITH CITATION?\_\_\_ TAKEN TO POLICE STATION OR JAIL?\_\_\_ MADE TO POST BAIL?\_\_\_

AMOUNT OF BAIL:\_\_\_ WAS YOUR M/C OR VEHICLE IMPOUNDED?\_\_\_ SEARCHED?\_\_\_

DID OFFICER(S) TAKE ANYTHING FROM YOU OR YOUR VEHICLE?\_\_\_ IF SO, WHAT WAS TAKEN (answer optional):\_\_\_

DESCRIBE YOUR VEHICLE:\_\_\_

LICENSE #:\_\_\_ CUSTOMIZED?\_\_\_ IF NOT AN M/C, DID YOUR VEHICLE HAVE ANY M/C EMBLEMS OR DECALS?\_\_\_

NAME, ADDRESS, & PHONE #'s OF ANY WITNESSES:\_\_\_

PLEASE GIVE A BRIEF DESCRIPTION OF WHAT HAPPENED:\_\_\_

PRINT YOUR FULL NAME:\_\_\_

GIVE YOUR COMPLETE ADDRESS:\_\_\_ PHONE #:\_\_\_

YOUR AGE:\_\_\_ INDICATE WHETHER MALE OR FEMALE:\_\_\_ ABATE CARD #:\_\_\_

YOUR SIGNATURE:\_\_\_ DATE SIGNED:\_\_\_

GIVE COMPLETED REPORT TO YOUR  
LEGISLATIVE DIRECTOR OR MAIL TO:

ABATE OF OREGON, INC.  
POST OFFICE BOX 4504  
PORTLAND, ORE. 97208



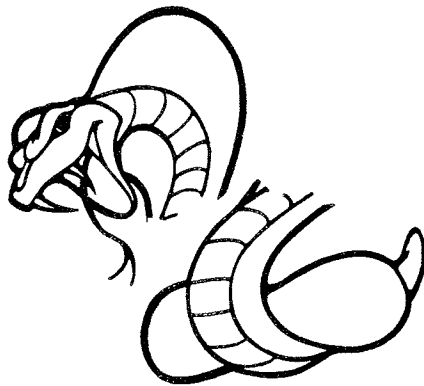
# - ABATE of Oregon -

## \* MEMBERSHIP CLASSIFIEDS \*

---

- FOR SALE - 1947 Indian Fat Bobs and dash panel - \$200 firm, CASH ONLY. Call D.J. @640-2880 (08-85)
- FOR SALE - 1977 KZ 650, Mag Wheels, 12,000 miles. Only \$650. Call Vernon @386-4112 days; Jon @ 352-6915 evenings. (08-85)
- FOR SALE - I.R.S. forces sale of immaculate 1979 FLH 80 cu.in. ElectraGlide. 31,000 on bike, 3000 miles on new low compression top end, late model guides w/ seals, Manley stainless valves. New exhaust system (2-into-1) with fishtail muffler. Performance Machine rear brake. All this new Sept '84. \$4200 or BEST OFFER, \$1200 cash or decent truck & take over payments. All offers or trades considered - let's deal! Call Joe @1-787-3735 evngs & wknds. (10-85)
- FOR SALE - Dark blue, nylon outside WHITE STAG sleeping bag. Inside has blue background with white horses. Yellow thermal blanket. Light blue air mattress. Dark blue sleeping bag cover with "ALTER" in black marker on bottom. Please contact Jon Alter or Karen Tambourine through the Klamath Falls Chapter State Reps. (10-85)
- FOR SALE - Stock Indian 74" girder forks w/risers, \$200. Harley Big-twin close-ratio third gear set, New, \$40. Will consider Indian glide risers in trade. Call (503)774-3752. (11-85)
- WANTED - One head for a 1963 late model T-120 Triumph. Call Ray @ 884-9071 (Klamath Falls) (10-85)
- LOST!! - St. Johns Chapter notebook! It's blue, and was in a lavender-flowered satchel. Besides the notebook, it contained a gavel, block, and misc. small stuff. Lost in the vicinity of N.E. 33rd & Marine Drive. If anyone has seen it or knows of its whereabouts, PLEASE call Barbara @289-2250 or Vickie @285-2186! (10-85)
- FOUND!! - Mans ring at Canal Creek (West Portland's) Run. Call Diesel Dave @ 255-8460 and identify it! (11-85)

**Half a  
snake  
is  
better  
than  
one!**



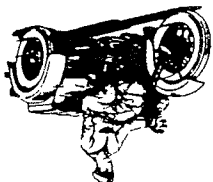
However, this is only true when you're dealing with a snake!

When you need photo reproduction, duplication and printing, on-time and right, you don't need to be looking in the grass. Just look to our nearest store. Call or come in, and talk to our communication consultants.

**Once You Compare, You'll Switch to Action.**

 **ACTION COPY CENTERS**

3747 N.E. Sandy Blvd. • 1222 S.W. Morrison • 3263 N.W. 29th Ave.  
**287-8321 • 222-4913 • 228-2803**



# CHAPTER MEETINGS

\* WHERE & WHEN \*



- DOUGLAS COUNTY MEETS 12:00 (noon) AT ROUND TABLE PIZZA IN ROSEBURG.
- EMERALD VALLEY MEETS 4:00 p.m. AT THE SUNDOWNER STATION, 213 SOUTH FRONT, IN CRESWELL.
- RIVER CITY MEETS 7:00 p.m. AT SOROSIS PARK IN THE DALLAS. (please see note below) \*
- ST. JAMES MEETS 12:00 (noon) AT PIETRO'S PIZZA, 4857 N. LOWARD, IN PORTLAND.
- KILMATH FALLS MEETS 7:00 p.m. AT GODFREY'S PIZZA, 3650 SOUTH 6th.
- SOUTHEAST PORTLAND MEETS 8:00 p.m. AT THE PIZZA BARON, 122nd & DIVISION, PORTLAND.
- SALEM CHAPTER MEETS 8:00 p.m. AT PIETRO'S PIZZA; TAKE THE MARKET STREET EXIT OFF I-5 SOUTH.
- JACKSON COUNTY MEETS 7 p.m. on Tuesday, 11 a.m. on Sunday, AT J.D.E.'S IN PHOENIX.
- BEND CHAPTER MEETS 7:00 p.m. AT PIETRO'S PIZZA - CALL PAT FOR MORE INFO @1-389-1388.
- WASHINGTON COUNTY MEETS 8:00 p.m. AT SUNSHINE PIZZA EXCHANGE IN FOREST GROVE.
- NORTHEAST PORTLAND MEETS 7:00 p.m. AT GINO'S PIZZA, ON N.E. HALSEY AT 108th.
- WEST PORTLAND MEETS 8:00 p.m. AT GINO'S PIZZA, 4050 SOUTHWEST CEDAR HILLS BLVD., BEVERTON.
- LINCOLN COUNTY MEETS 7:30 p.m. AT MOBY DICK'S RESTAURANT IN NEWPORT.

---> NOTE: River City's 2nd monthly meeting is held in Hood River at 7:30 on the THIRD MONDAY of the month. The location is announced at the FIRST monthly meeting.

*There's lots of our flyers in this issue - take a look inside!*

THE SEPTEMBER STATE BOARD MEETING IS AT SALEM CHAPTER'S MEETING PLACE - PIETRO'S PIZZA; TAKE THE MARKET STREET EXIT FROM I-5.

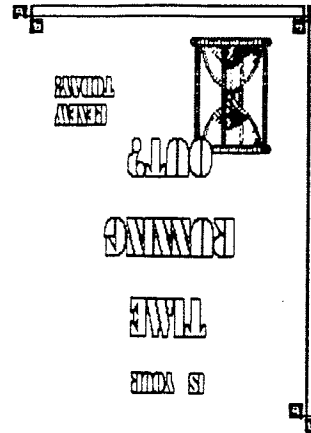
FIRST SUNDAY	1st & 3rd SUNDAYS
*--> FIRST MONDAY	1st & 3rd MONDAYS
1st & 3rd SUNDAYS	1st & 3rd MONDAYS
1st & 3rd MONDAYS	2nd & 4th MONDAYS
2nd & 4th MONDAYS	1st TUE/3rd SUNDAY
2nd TUE./4th SUNDAY	2nd & 4th TUESDAYS
1st & 3rd WEDNESDAYS	2nd & 4th THURSDAYS
1st & 3rd FRIDAYS	

AUGUST	S	M	T	W	T	F	S
	1	2	3				
	4	5	6	7	8	9	10
	11	12	13	14	15	16	17
	18	19	20	21	22	23	24
	25	26	27	28	29	30	31



A.B.A.T.E. of Oregon, Inc.  
P.O. Box 4504  
Portland, Oregon 97208

POSTMASTER: PLEASE FORWARD!  
ADDRESS CORRECTION REQUESTED



BULK RATE  
U.S. POSTAGE  
PAID  
Portland, Oregon  
Permit No. 638