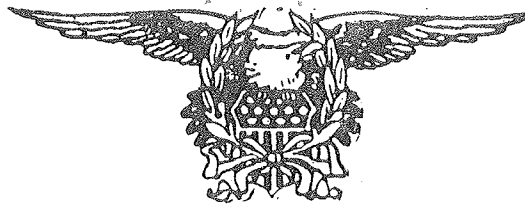


EDITOR:  
Gary Thompson

CO-EDITOR:  
Vicky Peterson



# A. B. A. T. E. of Oregon, Inc.

— FEBRUARY 1984 NEWSLETTER —

1984 IS HERE!! - DO YOU KNOW WHERE BIG BROTHER IS??  
(a note from your editor)

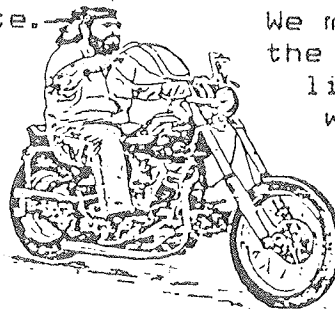
When George Orwell wrote "1984", the Second World War had been over for just three years. The society Orwell wrote about was based on Stalinist Russia, but took place in and on the island nation of Oceania, which seems to have been modeled on England. Orwell wrote of a society whose entire existence was monitored by an all seeing, all hearing, all knowing "Big Brother". It's been 35 years since the book was published, and while things remain pretty much the same for the people of the USSR, the "Big Brother" Orwell envisioned hasn't taken over the western world - yet.

This is the "information age" - but it's the business world as well as the government that's taken on the Big Brother role. Our entire lives are an open book to whoever has the proper codes and passwords to access the computers that store the records of our existence, and a government agency doesn't even have to ask - they can find out whatever they want to about you, and they don't even have to tell you about it!! Need to know who I called long-distance on Christmas day? Just ask GTE's computer. How about my financial condition? Check with my bank's data bank. Wonder if I may have anti-social tendencies? Look through the Motor Vehicle Division records to see what kind of vehicle I drive. Is it a motorcycle? What kind is it? A Harley?!! This fellow is trouble looking for a place to happen!! Let's see if he owns any firearms . . .

The point I'm trying to make is, while there aren't cameras and mikes in our homes yet (I won't mention the streets, since several U.S. cities use closed-circuit television to monitor downtown streets), the potential for abuse of power is always there, waiting for enough of us to grow complacent and accept anything our leaders tell us as the truth - "NEWSPEAK" is the term Orwell used. We must make a real effort to sift thru all the crap our politicians hand us so we can make intelligent and informed decisions about who we choose to represent us and how we want to be governed.

This is an election year. As ABATE members, it is up to EACH of us to make sure we are properly registered to vote; once registered, we HAVE TO FOLLOW THRU AND ACTUALLY GO TO OUR POLLING PLACE AND CAST OUR VOTES!! This isn't the USSR - we usually have several choices for any one office, and while all the choices may be bad ones as far as we're concerned, there is usually a choice we can live with.

ABATE's total state membership isn't even 1% of the over 92,000 motor cycles registered in the state. We must participate 100% in order to continue enjoying the freedoms we DO have! Do you want to be FORCED to wear a lid again? Do you want to have your right to ride on two wheels taken away from you by being forced to have insurance you can't possibly afford?! It can happen if we let our guard down!



\* BE INFORMED !

\* BE INVOLVED ! \*

*Dedicated to Freedom of the Road.*

**\*\* HIGHLIGHTS OF THE JANUARY 14th STATE BOARD MEETING \*\***

Do you have any ideas for legislation for the 1985 legislative session? Now is the time for us to get it together, BEFORE the session gets started. Send your ideas to Jim Dodson, ABATE of Oregon's Legislative Director, P.O. Box 4504, Portland, Oregon 97208.

Congratulations to Douglas County and J.C. from Douglas County for winning the membership drive. We pulled in 152 new members from September thru December, but we lost 300 due to non-renewals! That's a net loss of about 150 people. We all need to work to keep the members we Do have, as well as recruiting new members.

When I was trying to get in touch with Chapter Membership Secretaries I got more disconnected phone numbers than I did good ones. We need to keep up to date with phone numbers and addresses, and I need an updated officers list with phone numbers and addresses from EACH chapter. Send your list to the post office box (4504), Portland 97208. Do it TODAY!

Let us know you're out there. If you have ANY ideas for improving ANY aspect of ABATE of Oregon, LET US KNOW! Your State Board is elected by you and we do our best for you but we need to know how you feel about things, so drop us a line! (You should know the number by heart, by now!)  
Ride Free! Carolyn, State Corresponding Secretary

**WHEREAS:**

We are a small organization growing, and feeling the pains. We need consistant ways of doing our business, and we wish to keep our methods as simple, straightforward, and unrestrictive as possible.

Our world provides us with the example that the small group (Chapters) may make rules beyond those made by the large group (our whole organization as represented by the Board), so long as those rules:

- a) do not directly conflict with existing rules of the large group;
- b) do not conflict with the philosophical intent (Bylaws) of the large group.

Our example uses a court, or judiciary, system to monitor the rulemakers. We are not large enough to need (or maintain) a separate judicial branch, and since we only have two types of groups (Local Chapters and State Organization), we only need one stage of the example.

**THEREFORE:**

I propose the following admendment to the Rules of Operation:

**Article V - Chapters**

- 6. Chapters may make such local rules as are necessary to their successful operation.
  - a. Such rules must be consistant with the Bylaws and the Rules of Operation.
  - b. Any Chapter or Member may initiate a review of any Chapter rule by the Board of Directors by submitting a written request to the Chairman of the Board. The Board of Directors will decide the validity of the rule as set in Article III, #9 of these Rules.

Respectfully submitted,  
Brian Stovall, Representative,  
River City Chapter

**\*\* 1984 RUN CALENDAR \*\***

FEB. 11 - State Board Meeting, Eugene;	MAR. 10-11 - State Board Meeting/Convention - Camp Westwind	
APR. 14 - State Board Meeting, Eugene;	MAY 12 - State Board Meeting, Eugene	MAY 25,27,28 - Fossil/STATE RUN;
JUN. 09 - State Board Meeting;	JUN. 16, 17 - Bend Run;	JUN. 23,24 - West Portland Run/Canal Crk.
JUL. 07, 08 - Washington Co. Run;	JUL. 14, 15 - Lincoln County Run and State Board Meeting;	
JUL. 21,22 - Douglas Co./Windy Creek;	JUL. 28,29 - Jackson Co./Abbott Campgrnc;	AUG. 04, 05 - Klamath Falls Run;
AUG. 11 - State Board Meeting;	AUG. 18, 19 - East Portland/McNeil Run;	AUG. 25, 26 - Emerald Valley Run;
SEP. 08 - State Board Meeting;	SEP. 15, 16 - Central Oregon Run;	OCT. 13 - State Board Meeting;
NOV. 10 - State Board Meeting;	DEC. 08 - State Board Meeting	

**\* IS YOUR MEMBERSHIP DUE TO \*  
\* \* EXPIRE ? ? \* \*  
RENEW TODAY!! WE NEED YOU!!**

\* M I S C E L L A N I A \*

As mentioned in last month's newsletter, the SCREAMING EAGLE MOTORCYCLE WORKSHOP is planning on holding their annual bike show in July - probably the 14th. They're going to be holding a raffle at that time, and the prizes are really nice! They're all made "inside", and include one of the hardtail frames they've made, along with a really nice pair of saddle bags and a tool bag! The drawing will take place inside the walls of O.S.P., (I assume one needn't be present to win), and the winning tickets will be drawn by either an ABATE member or someone from the Salvation Army. Tickets are being sold for \$5.00 each, and if you will send your name, address, and phone number along with a MONEY ORDER made out to the SCREAMING EAGLES MOTORCYCLE WORKSHOP, they'll send you your ticket(s) by return mail. (You could help further by saving them postage and enclose a self-addressed stamped envelope for them to mail the ticket(s) back in - GMT). Give it a shot! A winning ticket is worth about \$500 in prizes!!

Screaming Eagles also has two NSU engines, frames, etc. One is a 175 and the other is a 250. These are basket cases, but complete for the most part; the frames are good and the engines and transmissions need a few small parts. Those of you who know about NSU's must also know that the Screaming Eagles shop just isn't adequate to work on antiques - they really have a problem running down parts, not to mention the manuals, they need to restore them. Since they need some large items for their current projects, the thought is that someone having the parts they need to finish their current projects may be willing to talk to the Screaming Eagles about a trade for the NSU's - they're willing. If someone wants to make a cash offer on the NSU's, they say they can probably work something out there, too.

Along with the list of needed parts that appears below, they could use a pattern or maybe a drawing for Sportster motor mounts - front and rear - so they can get their engine in the frame. The Sportster is going to be a "Shovster" drag bike; they're also working on a 1945 WL for a "45" show bike. Along with the parts shown, any and all donations of tools will be greatly appreciated. (No jokes about hacksaws, now.) Also, they'd like to point out that their activities are solely dependant on contributions - they are a non-profit organization, and receive no grants from the State or Federal Governments.

The U.S. Naval Reserve has just opened 8000 part-time jobs nationwide for young men and women with no prior service. These jobs are part of the new SEA and AIR MARINER program - it has excellent pay, benefits, options, bonuses, and even educational assistance. The program is designed for students in high school, vocational school or college who want to serve their country here at home. To find out more about "SAM", call your Naval Reserve recruiter at the nearest reserve center.

## Screaming Eagle Motorcycle Workshop

2605 STATE STREET

INC.

SALEM, OREGON 97310

Here are some of the major parts we need to complete these bikes;

SHOVESTER	WL
ROCKER ARM ASSEMBLY FOR SHOVEL HEADS	12 VOLT GEN. AND COIL
ROCKER ARM COVERS	TRANSMISSION GEARS AND BEARINGS
PUSH RODS	3 1/2 GAL. FAT BOB TANKS AND MOUNTS
PUSH ROD COVERS	MECHANICAL BRAKE (COMPLETE) FROM
TOP, FRONT AND REAR MOTOR MOUNTS	FRONT PEDLE TO REAR DRUM
COMPLETE WIDE GLIDE FRONT END	STOCK SPRINGER FRONT END
CLUTCH AND BRAKE CONTROLS (REAR MOUNT)	SET OF CAMS

These parts will for the most part complete the bikes, and if we can get a few donations of cash or sell a few hundred tickets we will be able to purchase the small parts we need to finish these and then COMPETE.

Again, we want to thank all of you who are supporting us with the parts you have sent. The next newsletter, hopefully will be more informative and we will have these bikes up-or almost by then so we will be able to send you some better news.

You can correspond with us at the address below. Thanks again.

STEVE BAKER, PRESIDENT  
SCREAMING EAGLES MOTORCYCLE WORKSHOP, INC.  
2605 STATE STREET (OREGON STATE PENITENTIARY)  
SALEM, OREGON 97310

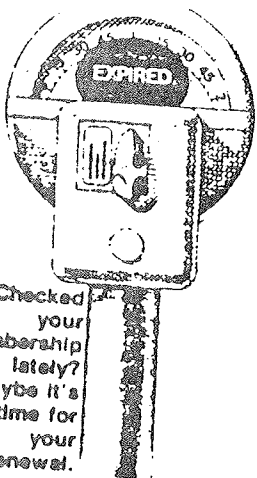
Respectfully,

Steve Baker, President

*Steve Baker*  
Bob Rice, Secretary

*Bob Rice*

P.S. DON'T FORGET, all donations are deductible from your State and Federal TAXES. We have a State deductible number and have applied for the Federal, which should be coming in soon. If you need the numbers, please don't hesitate to ask.



**DON'T PARK ON YOUR BROTHER'S OR SISTER'S DIME! RENEW TODAY!!**

\*\* CHAPTER REPORTS \*\*

\* BEND CHAPTER \*  
(No report received)

\* CENTRAL OREGON CHAPTER \*

Howdy from us down in CENTRAL OREGON. I missed last month's newsletter, but hope you all had a good Christmas and happy New Year. We were pretty busy around Christmas with two projects. One was our food drive and distribution which was a success. Then we had our Christmas tree sale which turned out very well. Thanks to the bad weather, people in Bend, Prineville, Redmond and around here couldn't get up to the woods, so everybody with trees for sale (even us!) sold out.

We've had some office changes lately. Bill is our new Media Rep - (give 'em hell Bill); we've eliminated the office of Vice-Coordinator, and we've done away with a Road Captain. Maybe next spring on that one. Kerry, our Secretary, has taken a leave of absence to have a kid, so Ralph is kind of filling in. I'll still handle the newsletter.

Our meetings are back to the 1st and 3rd Mondays of each month at 7pm at the Meet Market, 501 Cedar Street in Madras. I am including the address in case some of you have forgotten where it is. It's been a long time since some members have been to a meeting. Not only do we need EVERYBODY's support and input, YOU need to know what's going on also!

That's about all for this month. While people in Portland have been getting rained on, we've been having some nice riding weather and some of us have been enjoying it! In fact, the sun is out again this morning and melting last night's frost, so THIS rider's going to leather up and roar!! Until next month, Ride Free and watch out for the crazies! . . . Pete

\* RIVER CITY CHAPTER - THE DALLES \*

At our January 9th meeting, we had five people present: Chairman Brian Stovall, Co-Secretary/Treasurers Martin Richelderfer and Teresa Hepker, member Vernon Wade (who renewed at the meeting), and soon to be member Pete V. We discussed our need for member participation and the trouble we've been having complying with the State requirements (chapter reports, to be specific). Everyone present agreed to talk to others about coming to the February meeting. We also talked about going to visit people in the Hood River Valley in hopes of inspiring new blood.

Teresa suggested a possible public service project: the Oregon Department of Fish and Wildlife has started a Salmon Trout Enhancement Program (STEP) to improve the fish population in lakes and streams. Volunteers choose projects to do under the supervision of a O.D.F.W. biologist. If anyone is interested in this program, write Dick Herrig, STEP Coordinator, ODFW, 506 SW Mill, Portland, OR 97208. We hope that if we can find a project like this that will draw people's interest (a lot of us are fishermen), we might be able to get closer as a group, have a good time, and provide a public service that we all can benefit from.

The officers held a meeting January 12th to take care of paperwork and get our records and files back in order before the Board Meeting. We went over the membership list and wrote a letter to people who are expired or who haven't been coming to meetings in order to try to win back their support. A bake sale that was scheduled was a victim of bad weather and poor member participation. It brought in \$17.75, most of which was donated by the folks who made the goodies, then "bought" them. Thanks to their generosity, our treasury is creeping back towards the black (slowly).

A NOTE ON INSURANCE: AMA members are now eligible for coverage under a new AMA/Cycle-Gard Motorcycle Insurance Program, providing they meet certain requirements. See elsewhere in the newsletter for more information.  
River City Chapter's address is: 5224 CHERRY HIGHTS ROAD WEST, THE DALLES, OREGON 97058. -Martin & Teresa, Co-Sec./Treas

\* DOUGLAS COUNTY CHAPTER \*

Douglas County started off the new year in fine fashion with a party on New Year's Eve at Lindy's Tavern. We had great live music from the Blue Dragon Band and made \$51.00 on the cover charge . . . the door. The Toilet party scheduled for February will NOT be at Billie and Ken's as they are moving. We're hoping to get Lindy's to let us hold the party at their place, so come to the local meetings or read about it in the local newsletter for more information. In case you didn't see last month's newsletter, at a toilet party, everyone is charged \$ .25 for use of the bathroom, \$ .05 for each sheet of paper used and a fine is levied against those caught trying to cheat by sneaking outside.

In addition to the local fundraisers, we sold all of the first 200 calendars printed and we're having a second batch of 200 printed. The article featuring the winners is in the March issue of EASYRIDERS MAGAZINE. We hope we'll have a big mail order response from the magazine article. When this next batch of 200 is sold we probably will not have anymore printed, so get 'em while their hot!! Hopefully the profit from the calendars will enable us to send at least three kids to Camp Easter Seal this summer.

Other projects Douglas County has been involved in include our woodcutting projects and our annual Christmas Party at Pitchford Boy's Ranch. As mentioned last month, we've started a local newsletter for our Douglas County members; Shelley Batha is the editor. By the time this appears in the State Newsletter, the first edition will have been mailed and the Feb. edition will be in the works.

We have had some of our officers quit for various reasons. Elections were held at the January 8th meeting and the following people were elected: Public Relations Officer - Mike Blair

Sergeant-at-Arms - Terry Allen

Membership Secretary - Betty Blair

Congratulations to all three of you!

(continued on next page)

(DOUGLAS COUNTY CHAPTER REPORT CONTINUES)

Elsewhere in this newsletter there should be a page that will give everyone some information about driving under the influence of intoxicants. The new law is TOUGH, and the penalties are a bunch stiffer (pardon the pun) than before! Read and take heed!!

. . . Joy

\* EMERALD VALLEY CHAPTER - EUGENE \*

(no report received)

\* JACKSON COUNTY CHAPTER \*

Our annual Christmas tree hunt in December provided a blast for about twenty hardy, chili-dog eating souls - did everyone remember to find a tree???

Kelli B., chairman of the Valentine's Party Committee, has announced everything is set for the best party ever February 11th, 7pm, at the Naval Reserve Center. Hope to see you there again this year! (Roger, can you find your way?!)

Our weather has been somewhat acceptable for occasional riding - guess we're lucky down here. Everyone is waiting for spring and run time.

Ride safe! . . . Liz

\* KLAMATH FALLS CHAPTER \*

Hi all! Not a lot going on here. We had to cancel all of our December meetings. First, snowed basically in. Rescheduled. Snowed bad again. Next regular meeting - freezing rain and black ice, many accidents. We'd have been nuts to even try to get on the road. That's life this side of the hill, you never know . . .

We have changed our meetings to the 2nd and last Wednesdays of the month at 8pm - still the Linkville.

We have a Monte Carlo night in the works in an effort to fund what used to be the End-of-Season Run, which is now going to be the first weekend in August. Monte Carlo is going to be "about" the 1st Saturday in March. Come on down and buy some "funny money", win some prizes, and have a ball.

Ride Free! . . . Bob

\* LINCOLN COUNTY CHAPTER \*

Lincoln County hopes you had a safe and happy New Years. I find it hard at times to write an article this far in advance. It is hard to remember that what I write this month won't be read until next month.

It is with a great deal of sorrow that I report that we lost to death a very vital member of our group, Lois Davison. She was an inspiration to all that knew her. Without her, we would not have been able to do several of our projects. Her energy was never ending and she will be greatly missed.

We had our first Toy Run for Mrs. Santa Claus. It was held at the Chili Bowl Tavern. Another motorcycle club, Fair-weather Road Riders, started it two years ago. This was the third annual and a good time was had by everyone who attended.

Thanks to the generosity of Kate Scanell, we were able to sell Christmas trees she donated from her property. Then we ended 1983 with a bang at Moby's - we had a New Year's Eve party and raffle with live music to keep us moving and a large array of food - all of which made for a super time for those attending.

We will be holding our first anniversary party on March 3rd at Moby Dick's Restaurant. Hope some of you can stop by and help us celebrate. We're in the planning stages at this time.

We were really excited at our first meeting in January 1984 to learn that our membership now stands at 98. It is such a wonderful feeling to know that we share a common purpose with so many.

We don't seem to have too much in the works right now. Must be a time for a short rest - we'll catch our breath and begin moving again.

'til next month . . . Millie

\* NORTHEAST PORTLAND CHAPTER \*

Hello again from N.E. Portland. Our Toy Run was a big success, thanks to all who showed up and to everyone who helped. The Christmas tree cutting party also went very well; again, to all who helped we say THANK YOU!

Congratulations to Steve and Nancy Damico on their wedding; we wish both of you the best. Congratulations also to Brian Puckett, our NEW Legislative Director and Alternate State Rep, and to JoAnn Tracy, who will be our Toy Run Coordinator for 1984. We want to thank Vicky Grek very much for the great job she has done as our Toy Run Coordinator for the past 2 years - her job was tough but she gave it all she had and did great. Congratulations to Choce for taking FIRST Place in our chapter membership drive and THIRD Place in the State drive. We want to welcome our two newest members, Dana and Beryl.

I am interested in getting together with other chapters in Oregon and the U.S. to see what we can do about the bad publicity we bikers are getting on television, so if anyone else is interested or has any addresses of the other ABATE organizations in the U.S. please write me at 11216 N.E. Wygant, Portland, 97220. This is something that we all should work together on and try to change because it is the public that gets the image that all bikers are lowlife & should be made extinct, and that's what we're trying to change, so let's get together and show these people who and what we really are!

Until next month, ride free! - Leslie Shields

(Editor's Note: I'm sure everyone remembers Jan - the following is from her, somewhere on the road and in the wind.)  
Hi & Bye from Jan of N.E. Portland Chapter! No, I haven't dropped outa sight! Worked in Alaska awhile and now Fletcher (my bike) and I are gonna leap on down south awhile and warm up. I will keep in touch and send news of ABATE "happenings" from every friendly pad I land on. I'll miss ya'all, brothers and sisters, but you know how us frogs are. So before ya'all croak from reading this, remember, "RIDE MORE IN '84!".  
In the wind . . . Ribet

\* SALEM CHAPTER \*

"If I don't get a newsletter soon I'll scream!" Yes, that's how I felt but in the chapter's case the mail was delayed through the month of December. They may be in your hands already, along with your patches and cards. It's worth sticking around and showing patience.

To the people who can't make meetings, we appreciate your membership. We would like to see you though, and we'll probably have 'em on legal holidays as well, since Pietros is usually open. Come on down (or up) and see us - we meet on 2nd & 4th Mondays at 8pm - Pietros is just off the Market Street exit from I-5 south.  
Marge

\* SOUTHEAST PORTLAND CHAPTER \*

Here we are enjoying a non-legislative year and thinking deeply, all of us, about Education. One thing we need is communication with other chapters. The education program is of big interest to all the chapters. I hope Squeeze can keep in touch with all fourteen education officers.

Come to our meetings, no matter what Chapter you're from. They're held at the Pizza Baron at 122nd and Division on 1st and 3rd Mondays at 8pm.  
Marge

\* ST. JOHN'S CHAPTER \*

Here's hoping all of you made it thru the holidays safe and happy and looking forward to a brand new year. A few of the members were able to participate in the Toy Run put on by Washington County, but there was a real good turnout for the run to the Shriner's hospital on December 17th, with Legislative Director Jim Dodson donning Santa's traditional red suit.

St. John's chapter is a year old now and there's going to be an open-house anniversary on Sunday, January 22nd (that'll be history by the time this will be read!) at Ralph's Pizza (Prefetto's).

A raffle will be held (if we've sold enough tickets) for a foos ball table at the proposed mid-winter run. To buy tickets, see Ralph at Prefetto's, or call Vince (our coordinator) at 289-8127. Party-wise, there should be a date confirmation from Silver Creek Falls State Park by the next chapter meeting. The chapter decided on a Hot Dog/Chili Dog concession for FOSSIL this year - maybe even corn-on-the-cob if no one else places dibs first.

The matches are in and available; they've been distributed to the local motorcycle shops. Looking ahead, the St. John's Parade is being checked out to see if ABATE can get some representation - more on this later.

The chapter is attempting to give its members who can't make meetings on Tuesday nights a chance to get involved, so for the next three months, beginning in February, our second monthly meeting will be held on the FOURTH SUNDAY of the month at 2pm. We hope to see more of you there.

We have an addition to make on our State Rep. position - I mentioned the new and forgot a holdover - Anita! Sorry.

Please send any ideas for the coming legislative session to Jim Dodson at P.O. Box 17640, Portland, 97217.  
(With this chapter report, Gayle announced that, due to the fact she was unable to attend any State Board meetings, she is resigning her job as chapter secretary. I don't have the name of the new secretary, but the above is a compilation of both of their reports.)

\* WEST PORTLAND CHAPTER \*

Writing a report for the newsletter every month is never easy, especially since it won't be read until the following month, so I think a little recognition is due to those who successfully complete this task each month. (Hear, Hear! - Ed.)

Valentine's Day is soon to be here - I for one plan to celebrate the right way! I'm not getting out of bed! I know I'll have no trouble at all convincing Bill to do the same.

I have just a little message to all the people in our chapter who never come to the meetings: WE NEED YOUR HELP! With a quickly depleting treasury and low attendance, EVERYONE COUNTS!! Just come to a meeting and find out why we keep doing this. You might be surprised! Remember, united we stand!

Oh yes - congratulations to Gary! I'm sure you'll make the best editor yet. Good luck! . . . Laura Pratt, Sec.  
(Thanks for the vote of confidence, Laura. If you could see my desk just now . . . -GMT)

P.S. Don't forget, if you want an "In Memory of Suzi" patch, mail \$2.00 and your name and address to John Bctorf, 14240 SW Pacific Hwy, Tigard, OR 97223. Do it right away so he can get them ordered.

\* WASHINGTON COUNTY CHAPTER \*

Are you ready to get rid of the winter blues? Plan to come to the Washington County Open House MARCH 17TH and celebrate our first year with ABATE!! Details will be available closer to the date.

Our temporary meeting place is the Sunshine Pizza on Walnut Street in the same business building as the DMV, 2nd & 4th Tuesdays at 8pm.  
. . . Secretary "Melody" Judy Sureino



## ed youngblood

Executive Director

### Announcing AMA/Cycle-Gard

All of the surveys we conduct asking AMA members what additional services they would like to see from their Association invariably produce one reply: insurance. Those surveys, and the conversations I've had with members, reveal that many AMAers consider their motorcycle insurance coverage inadequate, or believe it is too expensive. Many purchase liability coverage only, in effect self-insuring their vehicles, because they prefer that risk to the cost of full coverage.

Because of this expressed need for improved or more affordable coverage, the AMA staff has spent nearly two years researching the motorcycle insurance industry. We have contacted every reputable company, and we have negotiated for almost a year with the most serious among them, looking for:

- A financially sound carrier;
- Competitive and affordable rates;
- Availability in as many states as possible;
- Quick and efficient claims service;
- Discounts for safe riding;
- Convenient payment plans;
- Multiple cycle discounts;
- A rate structure that will recognize mature riders or extensive riding experience; and
- Special consideration for AMA members.

Collectively, this list is a pretty tall order for any insurance company, but

we didn't feel the AMA should offer a program unless it was worthy of our membership. With that goal in mind, we are proud to announce the AMA/Cycle-Gard Program, underwritten by the Criterion Insurance Company in Washington, D.C. This is an insurance program exclusively for AMA members, offering a number of advantages to our riders.

For instance, AMA/Cycle-Gard recognizes the extensive riding experience

## AMA<sup>®</sup>/Cycle-Gard<sup>®</sup> MOTORCYCLE INSURANCE PROGRAM

common among AMA members. It offers lower rates for married riders 25 and older or single riders 30 and older. Because the average AMA member is just over 34 years old, and because 57 percent are married, this rate—about 20 percent lower than coverage for younger riders—will benefit the majority of AMA members. To qualify for the lower rates, you must also have been a licensed motorcyclist for at least three years with no at-fault cycle accidents and no more than one minor traffic conviction during that period.

Because so many AMA members own touring bikes and bikes with engines over 700cc, AMA/Cycle-Gard's competitive rates for bikes over 700cc should be very popular. So should the 10 percent discount for completion of a Motorcycle Safety Foundation rider course and the 10 percent second-year renewal discount.

AMA/Cycle-Gard provides the most widely available coverage we could find. Unfortunately, we couldn't find a company that writes insurance in every state, but Criterion offered us availability in 40 states plus the District of Columbia. AMA/Cycle-Gard will be available to all members except those residing in Connecticut, Delaware, Kansas, Massachusetts, Michigan, New Hampshire, New Jersey, New York, North Carolina and South Carolina.

AMA/Cycle-Gard customers will be able to get a rate quote or answers to their questions by calling a toll-free number, (800) 638-8760, and asking for "extension AMA," the key to quick special service, alerting Criterion operators that it's an AMA/Cycle-Gard customer on the phone. Sales and policy service assistance also will be available through 90 Criterion offices located in 28 states.

The most important benefit offered by any motorcycle insurer is claim service. We believe that Criterion's 24-hour-a-day, seven-days-a-week, countrywide claim-service network will pro-

vide exceptional service.

While AMA/Cycle-Gard will provide a full line of coverage from which members may select the insurance package they need, there are two special features that we believe will be most appealing. AMA/Cycle-Gard offers a \$50 road-service coverage (except in Texas) which pays for emergency service or towing when your bike is disabled. AMA/Cycle-Gard will also offer theft coverage for your off-road bikes

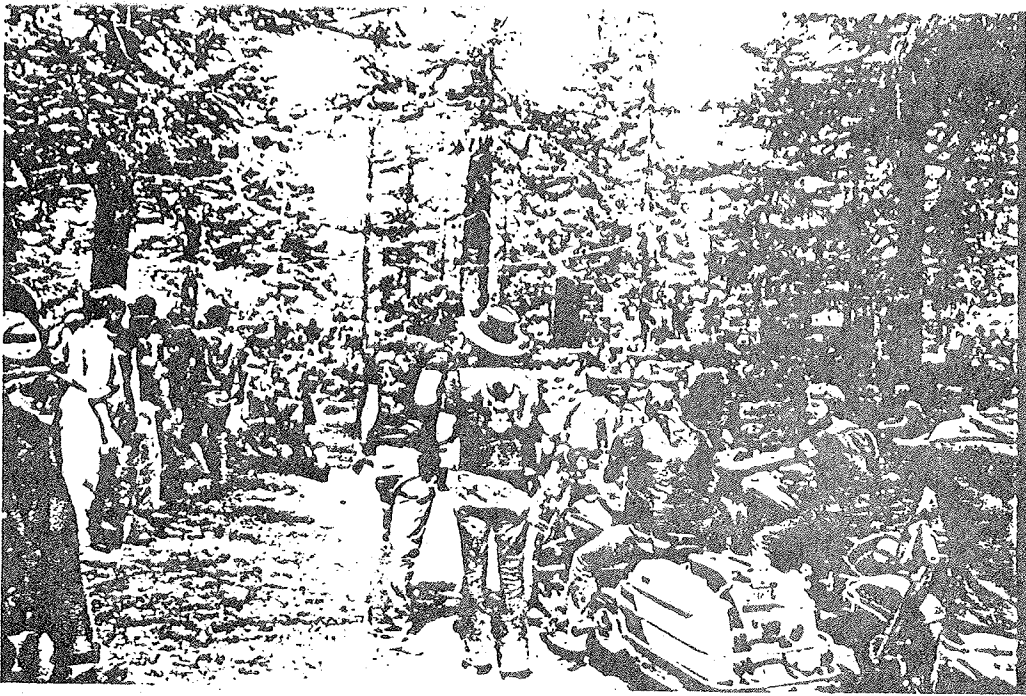
when you have a street bike insured. This special theft coverage can even be applied to your racing motorcycle or your ATV.

Obviously, we're very pleased to announce the new AMA/Cycle-Gard Insurance Program. It's a benefit that members have requested for many years and we've worked hard to develop a quality plan that we believe will meet the insurance needs of the majority of AMA members.

For more information regarding AMA/Cycle-Gard insurance, call the Criterion Insurance Company office in Tacoma, WA at 588-3882, or call the following toll-free number: 800-638-8760 - ask for extension "AMA".

You can join the AMA by sending \$20 for your first year's dues to:  
American Motorcyclist Association  
Post Office Box 141  
Westerville, Ohio 43081

**Evasive maneuvering**—You probably thought we were going to discuss politics, but this paragraph is actually about a move that may save your life. When a semitrailer is about to pass you on the highway, it's a good idea to move to the far right of your lane and decelerate. This will allow about eight feet of room between your bike and the truck and will keep you in the trucker's blind spot only momentarily. While that seems like common sense, AMA life member Kenneth Renner sent us this tip after seeing a motorcyclist sucked under a truck by its draft. Unfortunately, the motorcyclist who went down didn't live to write us about it.



LOOK FAMILIAR??

RECONIZE ANYBODY?

JIM DODSON TOOK  
THESE PICTURES.

We had a great time at McNeil -

Now's the time to start think-

ing about spring & summer so we

can begin planning upcoming runs:

It's only a few short months un-

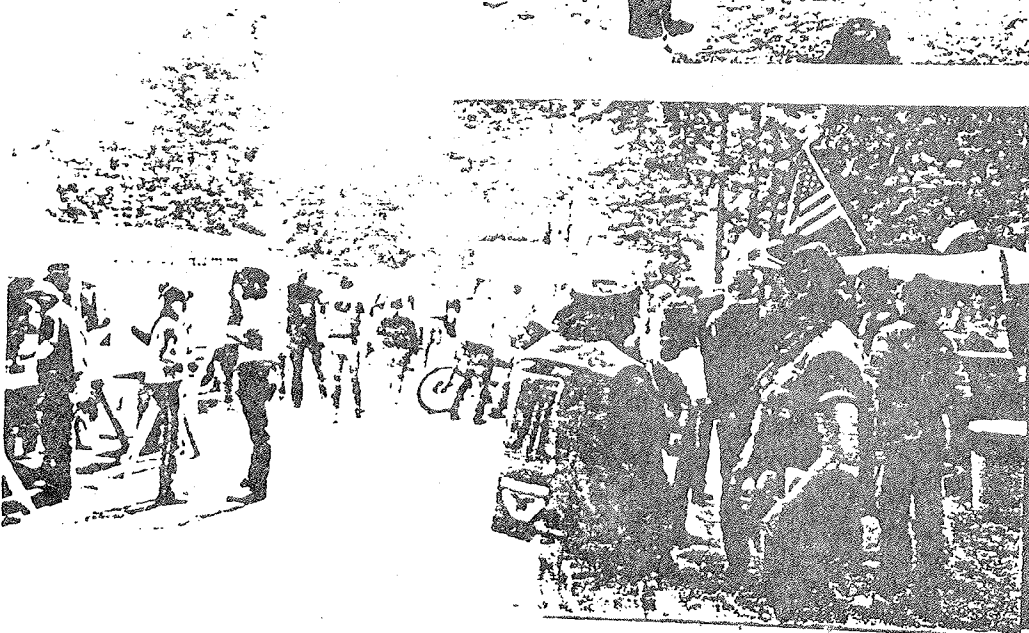
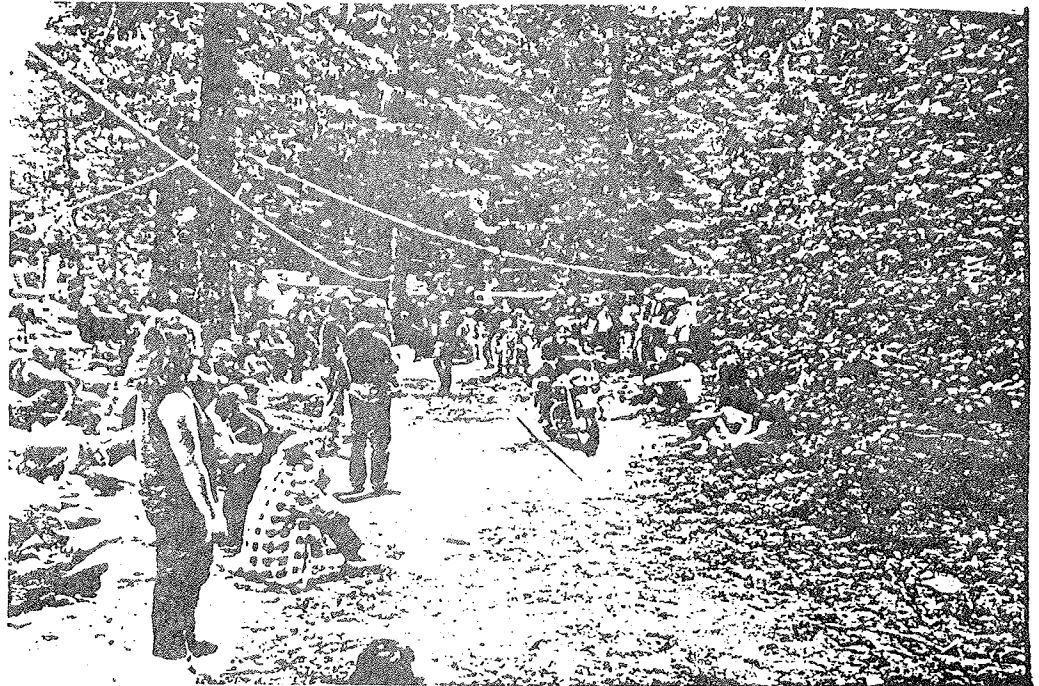
til FOSSIL '84. It's a three-day

affair this year, which means we

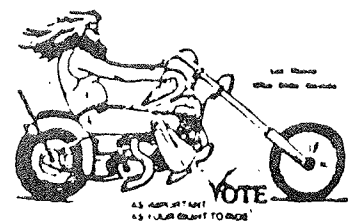
all need to plan extra hard to help

make this year's State Run the best

one ever!!



**Renew your mem-  
bership today, the  
ride you save,  
could be your  
own!!!**





### In Wyoming

It's official: The Wyoming helmet law will be no more after May 26. In its place is a bill requiring lids for riders and passengers only if they are 18 or younger.

Repeal came in large measure because of the unceasing efforts of ABATE of Wyoming. Some of the arguments they used to win their legislative battle — arguments that can also be used in other states — were listed in the following excerpt from their recent newsletter.

Why is there a mandatory helmet law for motorcyclists in the state of Wyoming?

Back in the early 70s states were forced to adopt mandatory helmet laws by the federal government, or lose federal funding for their state highways.

One state, California, refused to adopt a mandatory motorcycle helmet law, and didn't lose any of its federal funds.

The blackmail threat by the federal government, that forced states into adopting mandatory helmet laws, was terminated as of May 5, 1978.

Since then, 31 states have repealed or amended their mandatory helmet laws.

Wyoming and Nevada are the only two states west of the Mississippi River that still have a mandatory helmet law.

Back in 1978 Gary Cape made a study that compared the 25 states that had repealed or amended their helmet laws with the remaining states that still had helmet laws. His report was published by the National Conference of State Legislatures.

He found that the repeal states as a group had a slightly superior safety record than the group of states that still had a helmet law.

Some motorcycle safety authorities have adopted a fatalities-per-100-accidents ratio.

This figure is especially important because it directly addresses the principle of the alleged benefit of a motorcycle helmet law — the protection of cyclists. Even the fatalities-per-100-accidents ratio shows a slightly superior safety record for the group of "repeal" states when compared to the group of helmet law states.

Also, the Motorcycle Safety Foundation has released its safety statistics for 1980. They found states with helmet laws had more fatalities per 10,000 registered motorcycles than the states without helmet laws.

The Motorcycle Industry Council published a booklet recently, containing the 1981 statistics. From that booklet the following information was derived:

All states surrounding Wyoming which have already repealed or amended their mandatory helmet laws, including North Dakota, South Dakota, Nebraska, Kansas, Colorado, Utah, Idaho and Montana, — have fewer fatalities per registered motorcycle than Wyoming.

— have fewer fatalities per 10,000 registered motorcycles than Wyoming.

— have fewer fatalities per 100 motorcycle accidents than Wyoming.

The preceding information is positive proof that motorcycle fatalities do not automatically increase when a state repeals or amends its mandatory helmet law.

In fact, it can be determined that the motorcycle safety record will actually improve.

Helmet use can increase a motorcyclist's chances of having an accident by restricting vision, restricting hearing, producing heat fatigue, and the 2½- to 3½-pound weight of a helmet can

cause physical fatigue. It can also reduce a false sense of security with some riders.

In Wyoming a motorcyclist's chance of being involved in an accident is only two percent. That means that 98 percent of the motorcyclists are not involved in

accidents but are forced to wear a device that may increase their chances of being involved in an accident.

Don't believe an accident rate of two percent is great enough to constitute a law.

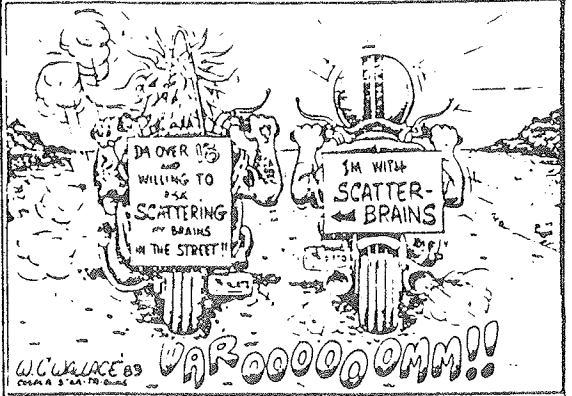
Automobile accidents produce a far greater number of fatalities due to head or head-related injuries than motorcycle accidents do. Why isn't there a mandatory helmet law for them?

ABATE is not opposed to voluntary helmet usage.

ABATE is opposed to being forced to wear a helmet. We also believe in a total repeal for adults and minors if you are an adult, we believe you should have the right to choose whether to wear a helmet or not just as you have a right to choose whether to wear a seat belt or not. 98 percent of the people killed in auto accidents were not wearing their seat belts! If you are a minor it should be a parental decision whether the minor wears a helmet, not a legislative decision.

But the results of a questionnaire showed the legislators favored repeal for adults only. Over a total repeal, House Bill 169 was written as a repeal for adults only as a compromise.

From Dennis E. Smith, AdAlt of Wyoming, 4011 E. 13th St. Cheyenne, Wyo. 82001.

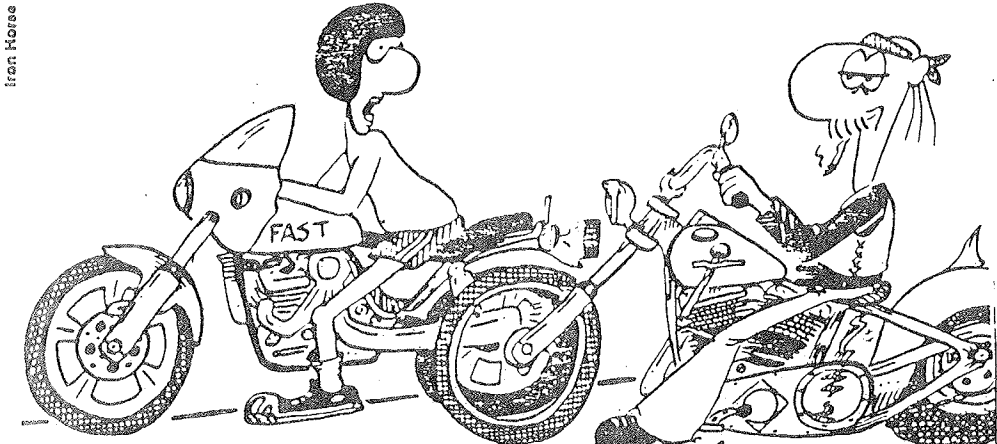


THE ABOVE EDITORIAL CARTOON APPEARED IN A WYOMING NEWSPAPER JUST BEFORE THE HELMET LAW WAS AMENDED IN THAT GREAT STATE !!!

### WHAT? NO NEWSLETTER, NO CARD?

No nothing. Some of our members are not receiving their newsletters, cards, or anything to acknowledge the money they gave to join. Well, there are several reasons for this. One is that occasionally your application may be mishandled by the staff or lost in the mail — Not likely. Second of all is that we never received it. When you join, someone should be handing you the receipt side of the application, with their name and signature on it. We need to know that person's name when you check on this problem. Third, is that some of these applications received are so sloppy that it's anyone's guess as to what name or address to enter into the computer. Last is in correct addresses and especially zip codes put down on the app. And sending us a notice of a change of address, along with one to the postmaster. Last issue we had over 70 newsletters returned with postmarks indicating wrong addresses or moved with no forwarding addresses, etc. If you don't notify the membership sec. how are we to know? If you don't receive this newsletter then it's because you either JUST joined or we absolutely do not have any record of you. Brenda Collier recently spent an entire weekend updating the membership file. It is correct according to the applications we now have.

SOUND FAMILIAR? ACTUALLY, THIS APPEARED IN ABATE OF MARYLAND'S LAST NEWSLETTER, BUT IT COULD HAVE APPEARED IN OURS AS WELL!



"Don't you know it's not safe to ride without a helmet?"

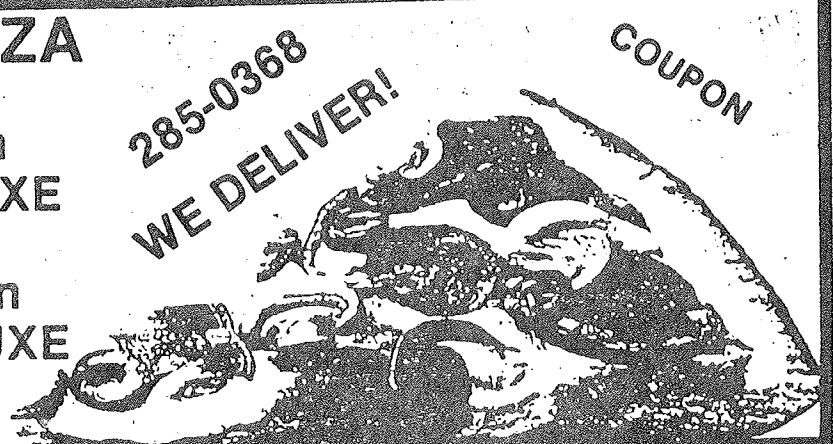
COUPON PREFETTO'S PIZZA  
\$2.00 OFF on

GIANT COMBO DELUXE

\$1.50 OFF on  
LARGE COMBO DELUXE

4857 North Lombard

285-0368  
WE DELIVER!



COUPON

INFORMATION ON DRIVING UNDER THE INFLUENCE OF INTOXICANTS LAWS

(This information was from a talk Richard Cremer gave at one of Douglas County's meetings.)

The standard used to determine if a person is intoxicated has been lowered several times in the past years. If you blow in the breathalyzer, the current standard is .08%. If a person drank four beers within one hour and then blew in the breathalyzer immediately, it would register .08% or legally intoxicated.

Alcohol goes in to the body faster than other substances because it is absorbed through the lining of the stomach. By drinking one drink (1 ounce of alcohol) an hour, your alcohol level would be .02%.

Your body dissipates (or gets rid of) alcohol at the rate of .01% per hour.

EXAMPLE: 3 drinks with 1 oz. of alcohol  
consumed within 1 hour would  
equal an alcohol level of ..... .06%  
Dissipation rate in 1 hour ..... (.01%)  
Alcohol level would be ..... .05%

If you have no convictions for DUII within the last 10 years, it is a good idea to blow in the breathalyzer. If you refuse to blow, regardless of your condition, you will get an automatic one year suspension of your license.

However, if you do not have any recent convictions and blow .08%, you are eligible for the diversion program. The diversion program requires that you go through alcohol counseling at your own expense but also lets you keep your drivers license.

A second conviction for DUII means jail time, probation and a three year suspension of you license.

Probable cause when stopped - The police have to tell you why they have stopped you. They can not detain you any longer than necessary for the reason you have been stopped. They have the legal right to ask you to get out of your car but YOU DO NOT HAVE TO GET OUT. Try not the breath in their face if you have been drinking. Crack the window enough to give them your license and talk with them as little as possible.

If you are a passenger in a car you do not have to show your identification.

Field Sobriety test - You do not have to take the road side tests if asked. If you do not take them the cop will have to make his decision about arresting you based on his observations of your driving and your actions after he has stopped you. Even sober people can have difficulties with the road side tests so it is best to never take them if asked.

Searching your car - Your car can only be searched if the police have probable cause that there might be something contraband in the car. If they see you pushing something under the seat or smell pot they can ask to search your car. You do not have to consent but do not resist if the police insist. Simply refuse to give your consent. Lock your car after getting out if you are being arrested. They might want to impound your car. If possible ask them if you can call a friend to come get your car and move it.

ACTION REPORT

A.B.A.T.E.

Describe Your Vehicle \_\_\_\_\_  
License No. \_\_\_\_\_ Was It Customized? \_\_\_\_\_ If Not On A M/C \_\_\_\_\_  
Did Your Vehicle Have Any M/C Emblems Or Decals? \_\_\_\_\_  
Name, Address, & Phone Numbers Of Any Witnesses \_\_\_\_\_  
\_\_\_\_\_

In Your Own Words, Describe Briefly What Happened \_\_\_\_\_  
\_\_\_\_\_  
\_\_\_\_\_  
\_\_\_\_\_  
\_\_\_\_\_  
\_\_\_\_\_  
\_\_\_\_\_  
\_\_\_\_\_  
\_\_\_\_\_  
\_\_\_\_\_  
\_\_\_\_\_  
\_\_\_\_\_

PRINT Your Full Name \_\_\_\_\_ Phone No. \_\_\_\_\_  
Your Address \_\_\_\_\_  
Your Age \_\_\_\_\_ Male? \_\_\_\_\_ Female? \_\_\_\_\_ ABATE Card No. \_\_\_\_\_  
YOUR SIGNATURE \_\_\_\_\_ Date Signed \_\_\_\_\_

Police Ofc. Name \_\_\_\_\_ Badge No. \_\_\_\_\_  
Officers Police Agency \_\_\_\_\_

Ofc. Car License No. \_\_\_\_\_ Color(s) Of Car \_\_\_\_\_  
Was Car Marked? \_\_\_\_\_ How Was It Marked? \_\_\_\_\_  
Was Ofc. In Uniform? \_\_\_\_\_ Plain Clothes? \_\_\_\_\_ Other? \_\_\_\_\_

If. Ofc. Not In Uniform, How Did He Identify Himself? \_\_\_\_\_  
\_\_\_\_\_  
More Than One Officer? \_\_\_\_\_ More Than One Car? \_\_\_\_\_  
Name & Badge No. Of Other Officers \_\_\_\_\_

Other Officers Police Agencies \_\_\_\_\_  
Other Ofc. Car License No. \_\_\_\_\_

Date You Were Contacted \_\_\_\_\_ Time \_\_\_\_\_ AM \_\_\_\_\_ PM  
Address Where Contact Made \_\_\_\_\_  
City \_\_\_\_\_ County \_\_\_\_\_

Was Contact Made On/In Public Street? \_\_\_\_\_ Public Property \_\_\_\_\_  
Private Property? \_\_\_\_\_ Private Residence? \_\_\_\_\_ Other? \_\_\_\_\_  
Reason Given By Ofc. For Contact \_\_\_\_\_

Were You Searched? \_\_\_\_\_ Your Picture Taken? \_\_\_\_\_  
Were You Given A Ticket? \_\_\_\_\_ Arrested? \_\_\_\_\_ Other? \_\_\_\_\_  
Type Of Ticket: Warning \_\_\_\_\_ Traffic \_\_\_\_\_ Crime \_\_\_\_\_ Other \_\_\_\_\_  
Ticket No. \_\_\_\_\_ Charge(s) Listed On Ticket \_\_\_\_\_

If You Were Cited Into Court, Name Of Court \_\_\_\_\_  
Date You Must Appear \_\_\_\_\_ Time \_\_\_\_\_ AM \_\_\_\_\_ PM  
Were You Released With Ticket? \_\_\_\_\_ Taken To Police Station  
or Jail \_\_\_\_\_ Made To Post Bail? \_\_\_\_\_ (Amount of Bail \_\_\_\_\_)  
Was Your M/C or Vehicle Impounded? \_\_\_\_\_ Searched? \_\_\_\_\_  
Did Ofc. Take Anything From You Or Your Vehicle? \_\_\_\_\_

GIVE COMPLETED REPORT TO YOUR  
LEGISLATIVE DIRECTOR OR MAIL TO:

ABATE OF OREGON  
P.O. Box 4504  
Portland, OR 97208

# Arneson, Wales & Bernier

LAWYERS

(503) 673-0696

**Emphasizing:**

Criminal Law  
Civil Rights  
Domestic Relations  
Personal Injury

**Also Concentrating in:**

Adoptions  
Bankruptcy  
Consumer Law  
Guardianship  
Wills  
Probate  
Business  
Real Estate

346 SE Rose • Roseburg, Oregon 97470

# HIGH PERFORMANCE JEWELRY

H.D.  
100 MILE AN HOUR BIKER JEWELRY

GOLD - SILVER - BRONZE  
BY BIKERS... FOR BIKERS!

CHRIS  
P.O. Box 167  
SOUTH BEND, OREGON 97366  
503-867-8111

# MONTE'S

(503) 265-2741

# MACHINE

Specializing In Head work  
and Engine Rebuilding

# SHOP

949 N. Coast Highway Npt Ore 97365

# HARLEY-DAVIDSON

Midnight H.D.

**COMPLETE SERVICE**

**BUY • SELL • TRADE**

Tues. thru Sat. 10-6

5727 SE 71st • 771-8723

# R R HAWG SHOP

Custom Motorcycle  
Parts & Service



Specializing in  
Harley Davidson

342 N.W. 15th St.  
Newport, Oregon 97365

Phone  
(503) 265-7628

# BOOKS OF ALL PUBLISHERS

PERSONAL  
ATTENTION  
TO SPECIAL  
ORDERS

Canyon Way  
Bookstore  
and Restaurant

Newport, OR 97365  
503-265-8319

# OLD SUNSET SILVER COMPANY

JEWELRY MANUFACTURING & REPAIR

135 N.W. 3RD STREET  
NEWPORT, OREGON 97365

(503) 265-3188

BRONZE CASTING  
UP TO 2 LBS

P.O. Box 208  
NEWPORT, OREGON 97365

Canyon Way Bookstore will  
order any motorcycle  
manual cheerfully.....

# ABATE of OREGON, Inc.

*Let Those Who  
Ride Decide*



*Dedicated to  
Freedom of the Road*

A.B.A.T.E.- A Brotherhood Against Totalitarian Enactments

ABATE is bikers and motorcyclists from all walks of life that have come together to voice and work for sensible legislation for safe freedom of our public roads and to foster and promote to the general public a sense of motorcycle awareness. In other words, we want everybody to realize that motorcycles are here to stay and we want to do what we can to help make motorcycling safer for us all.

ABATE of Oregon is a statewide organization with local chapters throughout the state. Each chapter conducts business according to its own needs, under the guide lines established by the State Board. The State Board is made up of two representatives from each chapter, and its officers are elected from those representatives.

ABATE functions as a legislative organization and has been instrumental in effecting fair legislation concerning motorcycles. The helmet law is but one of the many Bills we have dealt with.

ABATE members also donate time and labor to other non-profit organizations, our annual Toy Run being but one of these activities.

ABATE chapters also sponser motorcycle runs throughout the state in an effort to raise funds for operating expenses. These runs also provide people with a shance to get together and to meet new people and have an all around good time.

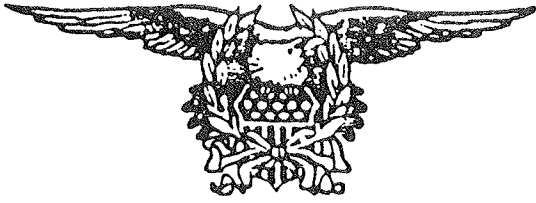
These are but a few of ABATE's functions. For more information, attend a local meeting.

If you or someone you know rides a motorcycle, on or off the road, ABATE has a lot to offer you and you have a lot to offer ABATE. Why don't we get together and do our bit towards helping to make life just a little bit better for all of us?

ABATE is another example of AMERICA in action!!!

*means Freedom*

A  
B  
A  
T  
E



# A.B.A.T.E. of Oregon, Inc.

P. O. Box 4504  
Portland, Oregon 97208

---

*Dedicated to Freedom of the Road.*

**\*\* WHY SHOULD I ADVERTISE IN THE A.B.A.T.E. NEWSLETTER? \*\***

ABATE of Oregon has over 500 members across the state to which newsletters are mailed the first week of each month. In addition, many members have family memberships, which means that the majority of newsletters are read by more than one person.

We have just revised our advertising structure to allow you more flexibility in purchasing advertising space in our newsletter. We can now sell space on a quarterly, half-yearly, or yearly (as before) basis. Our rates are listed below:

<b>BUSINESS</b>		<b>1/4 PAGE:</b>	
<b>CARD SIZE:</b>	\$ 25.00 - 3 months		\$ 33.00 - 3 months
	\$ 45.00 - 6 months		\$ 60.00 - 6 months
	\$ 75.00 - 12 months		\$100.00 - 12 months
<b>1/2 PAGE:</b>	\$ 50.00 - 3 months	<b>FULL PAGE:</b>	\$85.00 - 3 months
	\$ 95.00 - 6 months		\$160.00 - 6 months
	\$150.00 - 12 months		\$250.00 - 12 months

To allow even more flexibility, your advertisement may be changed each month for the duration of your purchased time. For example, if you run a business card size ad for three months, you can submit three business cards offering month long or limited time specials. Should you purchase ad space for a year, you could change your ad 12 times! Advertising copy DOES need to be submitted by the 15th of the then current month in order to appear in the following month's newsletter. To order your ad in our widely read newsletter, please fill in the form below, send it and your first month's ad copy, pre-paid, to ABATE of Oregon, Inc., P.O. Box 4504, Portland, Oregon 97208.

- A.B.A.T.E. of Oregon -  
\* MEMBERSHIP CLASSIFIEDS \*

---

- FOR SALE - 1970 HD 74" basket, wide glide, fat boos, swing arm complete - \$1200; 1963 bus motor home w/carpet, TV, stereo, new motor - \$2000; 1972 Chev SW w/400 motor, 400 Turbo, good radials - \$500. JC, 679-4497
- FOR SALE - 1976 Sportster - rebuilt and clean. \$2500; H-D fiberglass saddlebags and trunk w/chrome railings - \$200. Man's black leather jacket - \$75. Lady's leather jackets - \$25. Call for info: 281-4811. Northeast
- FOR SALE - '75 Ford F-100 350 V-8 Super-Cab, short bed, custom canopy w/boat rack, tow hitch, 3-speed trans, PS, PB, A/C, AM/FM-Tape, spot light, good rubber, low milage, minor body work needed, many other extras. \$2500 or trade for something smaller. Call Jim or Chris at 289-5220
- FOR SALE - '74 Sportster rigid frame 1000cc - \$2295. 640-3803 or 640-9249 - Mike or Deb
- FOR SALE - 1980 Harley FXS Low Rider, 4000 miles - \$5000 cash. Call Mike @ 772-4880
- FOR SALE - Seeburg background music system (model LPU-1). This unit has a Seeburg jukebox head mechanism and holds 100 records (45rpm). It can be programmed to play one or both sides of any record or skip over it. Remote volume control and cancel. includes pre-amp and amplifier. Amplifier has a mike jack for PA system, 8-16 ohm and 70v. Constant voltage outputs. See and hear to appreciate. Barber @ 357-5322
- FOR SALE OR TRADE - Transmission gears - will fit '79 to present. 1st gear Andrews, 2nd, 3rd, 4th gears stock Hog; will trade for S&S Super Single Carb and manifold, or sell for \$250 (cost over \$400) or will trade S&S dual throat carb and manifold for S&S Super single throat carb & manifold w/aircleaner. Dual Throat has been ported and polished. Tiny, c/o Jackson County ABATE, Box 1184, Medford, Oregon.
- FOR SALE - Leather Jacket size 48 or 50 - \$100; wrap around chaps, 3/4 length - \$50; size 46 vest, lined - \$50. 223-5968
- FOR SALE - 1980 Shovel Head custom made Low Rider; new blue Imron paint, lots of chrome, drag pipes, belt drive, Harley drag bars, 13" custom aluminum rear wheel, 21" matching front wheel, new leather solo seat with springs, three gallon Pauchco tank, fiberglass fenders, new valve job, new bearings and seals in swing arm. See to appreciate. CALL FOR PRIDE. Also, late model VW transaxle with trike frame and 2 chrome wheels - \$250. Call Roger 287-2795
- FOR SALE - 1957 45" rebuilt motor, like new, 600 miles - \$3800. Call Mitch @ 641-6581.
- FOR SALE - 1982 Sportster w/1600 miles, like new; miscellaneous custom parts - \$3500. (206)892-0669.
- FOR SALE - 1975 XLCH Sportster. Fresh engine and tranny, Mikuni, lots of chrome and extras. Dan Abbott @ 655-4310.
- FOR SALE - Men's Langlitz leather jacket, size 44 - \$100. Call Gary @ 287-3960 or 283-1036. Portland.
- FOR SALE - Brown leather saddlebags - NEVER USED. Original 1938. \$250 FIRM. Call Darryl Maertz @ 826-2394.
- FOR SALE - 1970 IH Scout 4X4; Stereo, CB; clean, 10-miles - \$1800 or trade. Call Vince @ 289-8127.
- WANTED - 45 stock frame in good condition. Call Kraz Larry @ 289-8027.
- IN NEED OF-- Many FLH parts, 1975 or thereabouts. Need speedo, dashboard, Bendix carb, intake, handgrips, front brake/brake cable, throttle linkage, fatboos, almost any FLH parts. Mike Wiley (Ashland) 482-2434 or Mike White 772-4880.
- WANTED - Two roommates in North Portland. \$150 or \$175. 2 sizes. Call Leslie @ 243-2081 or 281-7752.

\* CHAPTER MEETING PLACES \*

1st & 3rd SUNDAYS Douglas County: Noon, Mr. Pizza, Roseburg  
 1st & 3rd SUNDAYS Jackson County: 11pm, JCE's, Phoenix  
 1st & 3rd SUNDAYS Emerald Valley - Eugene: The Guide Shack Tavern,  
 52nd & Main, Springfield  
 1st MONDAY River City: 8pm, Spooky's Pizza, The Dalles  
 1st & 3rd MONDAYS S.E. Portland: 8pm, Pizza Baron, 122nd & Division  
 1st & 4th MONDAYS Central Ore: 7pm, Meet Market, 601 Cedar, Madras  
 2nd & 4th MONDAYS Salem Chapter: 8pm, Petro's, Mkt. St. exit, I-5  
 2nd & 4th TUESDAYS Bend: 7pm, Petro's; Call Pat for info 1-389-1388  
 2nd TUE./4th SUNDAY St. John's: 8pm on Tuesday, 2pm on Sunday,  
 Prefetto's Pizza, 4857 N. Lombard, Portland  
 2nd & 4th TUESDAYS Washington County: 8pm, Pizza Hut, East Hillsboro  
 1st & 3rd WEDNESDAYS N.E. Portland: 8pm, Gino's Pizza, 108th & Halsey  
 2nd & 4th WEDNESDAYS Klamath Falls: 8:00 pm, Linkville Station Tavern  
 2nd & 4th THURSDAYS West Portland: 8 pm, Gino's Pizza, 4050 Southwest  
 Cedar Hills Boulevard, Beaverton  
 1st & 3rd FRIDAYS Lincoln County: 8pm, Moby Dick's Tavern, Newport  
 ++++++ \* U P C O M I N G E V E N T S \* ++++++

February 11th: State Board Meeting, Eugene.  
 March 3rd: Lincoln County Anniversary  
 Moby Dick's Tavern  
 State Board Meeting/Convention  
 March 10th: Camp Westwinds  
 Washington County Open House  
 March 17th: Washington County Open House

FEBRUARY 1984

SAT	FRI	THU	WED	TUE	MON	SUN
		1	2	3	4	5
		6	7	8	9	10
		11	12	13	14	15
		16	17	18	19	20
		21	22	23	24	25
		26	27	28	29	30
		31				

MARCH 1984

SAT	FRI	THU	WED	TUE	MON	SUN
		1	2	3	4	5
		6	7	8	9	10
		11	12	13	14	15
		16	17	18	19	20
		21	22	23	24	25
		26	27	28	29	30
		31				



A.B.A.T.E. of Oregon, Inc.  
 Post Office Box 4504  
 Portland, Oregon 97208

TERESA HEPPER  
 5224 CHERRY HTS. RD., W.  
 THE DALLES, OREGON  
 97058

Check your card! Time to renew!

BULK RATE  
 U.S. POSTAGE  
 PAID  
 Portland, Oregon  
 Permit No. 638